

lighting solutions



ledluks



Slovenia

- ① Vrtojba: **Headquarters & 2 Production Facilities**

Italy

- ② Treviso: **Outdoor Lighting Production Facility**
- ③ Gorizia: **Production Facility**

Constantly growing and expanding our business

Focused on long-lasting quality and steady growth

Flexibility, responsiveness, long-term relationship



80 team members



30 % annual growth



Distribution network



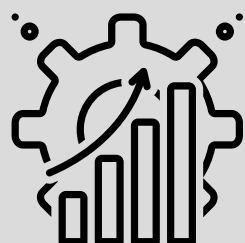


In-house design, development and manufacture of high-quality LED luminaires



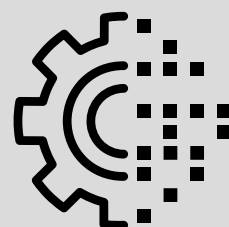
FLEXIBLE PRODUCTION ORGANIZATION

The ability of a manufacturing system to quickly adapt to changes in demand, design, or volume.



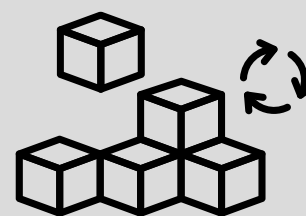
PRODUCTION CAPACITY

Up to 200.000 linear fittings per year (i.e., 800 profiles/day).



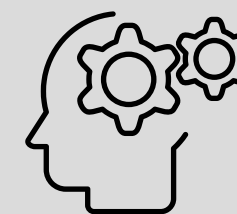
DIGITALIZED PROCESSES

Award-winning project: Digital project of the year 2022 in Slovenia



CUSTOMIZED LIGHTING SOLUTIONS

Customizable project solutions based on a modular product design. More than 20mio standard codes for the profiles.



TECHNICAL KNOWLEDGE

A dedicated team for customer-oriented solutions and new product development.

Components from top suppliers

JUNGBECKER



OSRAM



TRIDONIC

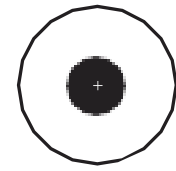
Collaboration with photometry laboratories, research institutes, and universities



Certifications



Awards



BIGSEE PRODUCT DESIGN AWARD 2020 WINNER



Performance driven

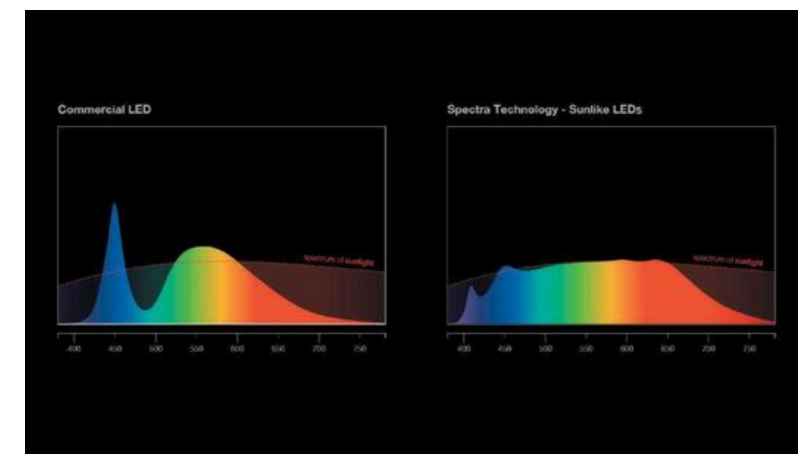
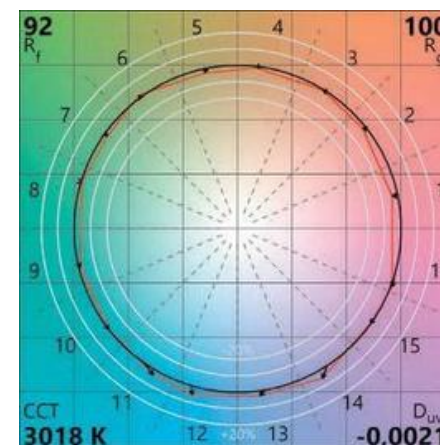
Tunable White. ●●●●
Replicates natural light cycles indoors.



Positive impact on the human biorhythm, health, sleeping quality and concentration.

Standard color temperature:
2700K, 3000K, 4000K, 5000K

Spectra with **SunLike** LEDs.
The closest light to the
sunlight spectrum.



Light control system

PRESENCE AND
DAYLIGHT SENSORS



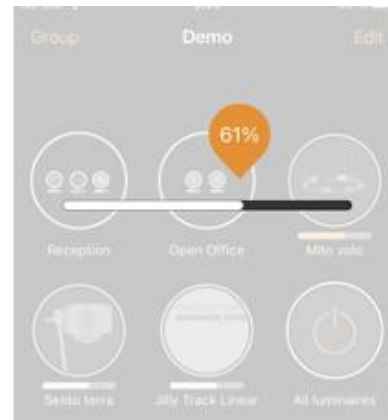
PULL SWITCH DIM



CASAMBI REMOTE



CASAMBI APP



Adjust the lighting according to your needs.



Technical Excellence. Aesthetic Freedom.

Our standard portfolio, complemented by customisable solutions, allows you to tailor each luminaire according to lengths, shapes, optics, mounting types, and control management options, providing the ideal lighting for any task, workstation and space.

Choose from an extensive palette of colours, refined surface finishes, and premium materials to seamlessly integrate each luminaire into the architectural identity of your space.

Sustainability

Product development, design and life cycle

- Product modularity
- Component substitutability
- High quality materials, made in EU

Conscious production and logistics

- Digitalized and energy-efficient production
- Sustainable packaging
- Local and environmentally responsible suppliers

Environmental Product Declaration (EPD) for various product families



ILO
THE SUGARCANE
LUMINAIRE
NATUR

NEW LOOK TO
SUSTAINABILITY

FLORA

SUSTAINABLE BY
NATURE.
REMARKABLE BY
PERFORMANCE.

MIDI
RA
W

FEEL THE LIGHT



Technical lighting



Technical ambient lighting



Outdoor lighting

UNDERSTAND
THE LIGHT

SEE THE
LIGHT

EXPLORE
THE LIGHT

Workspaces and Technical Ambient

Made in EU, 5 year warranty



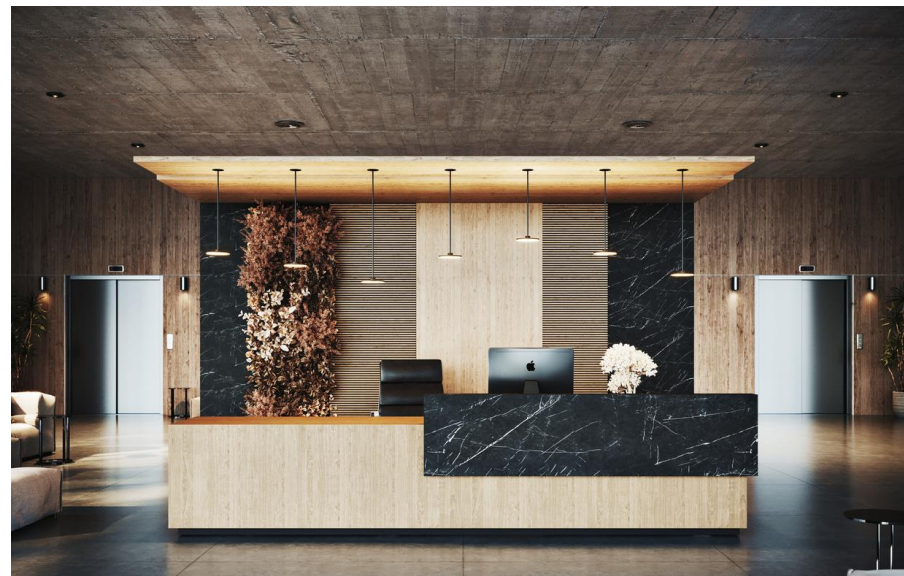
OFFICES



PUBLIC / EDUCATION



ARCHITECTURAL



HOSPITALITY

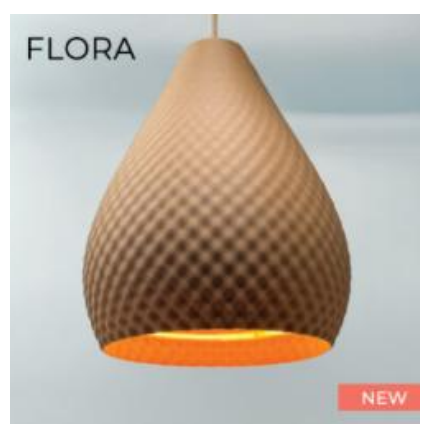
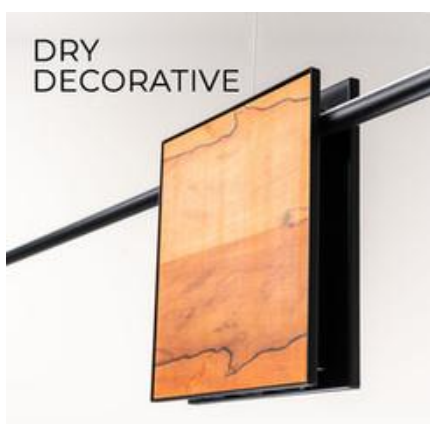
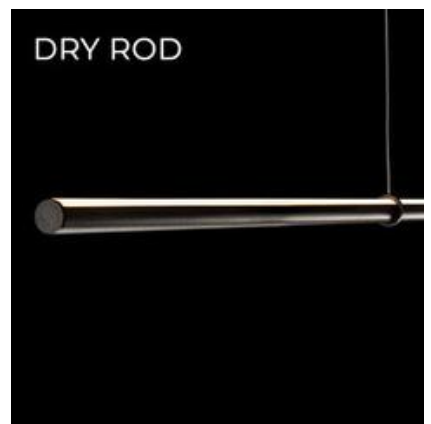


INDUSTRY / SPORT



EXHIBITION

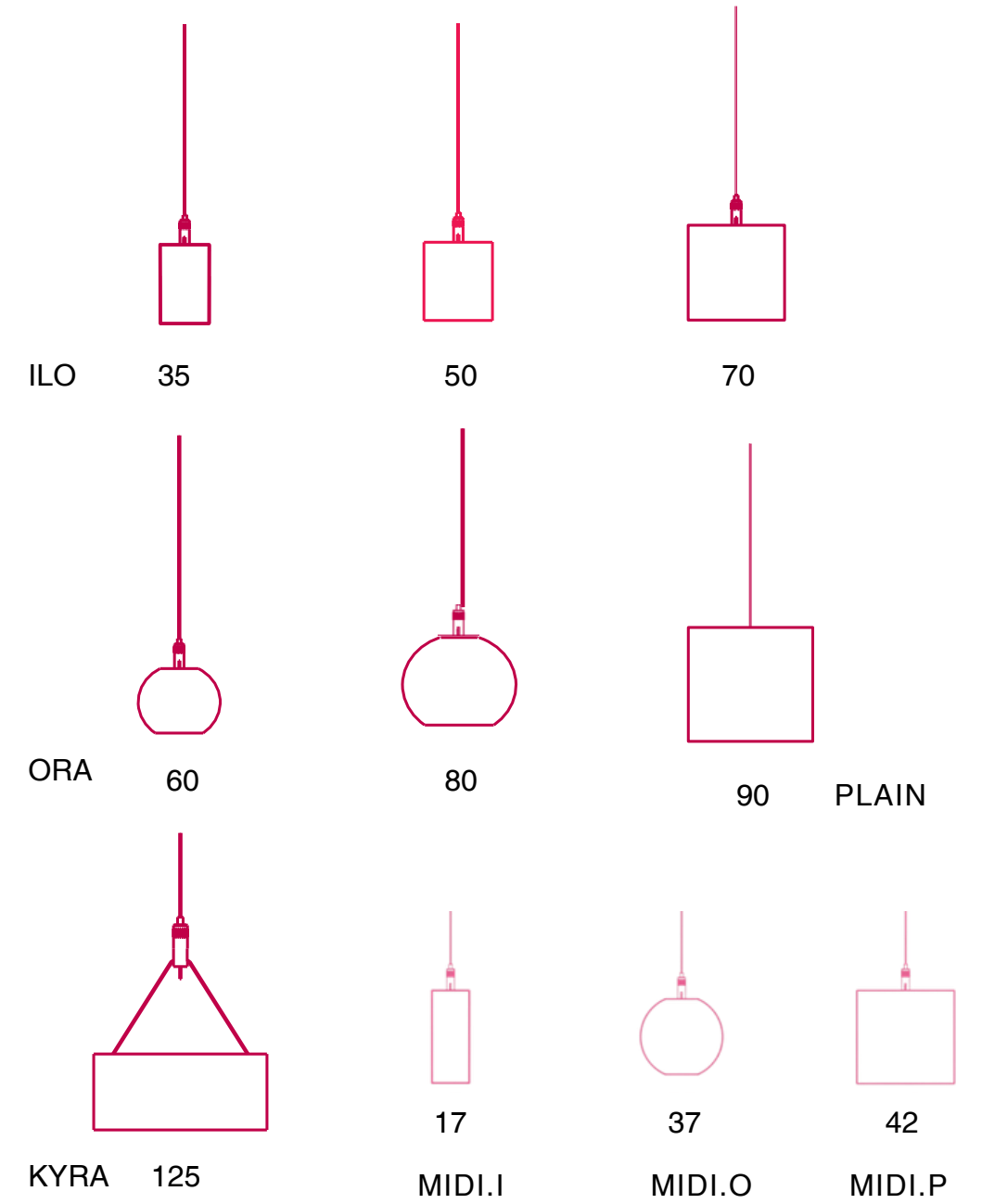
Product families



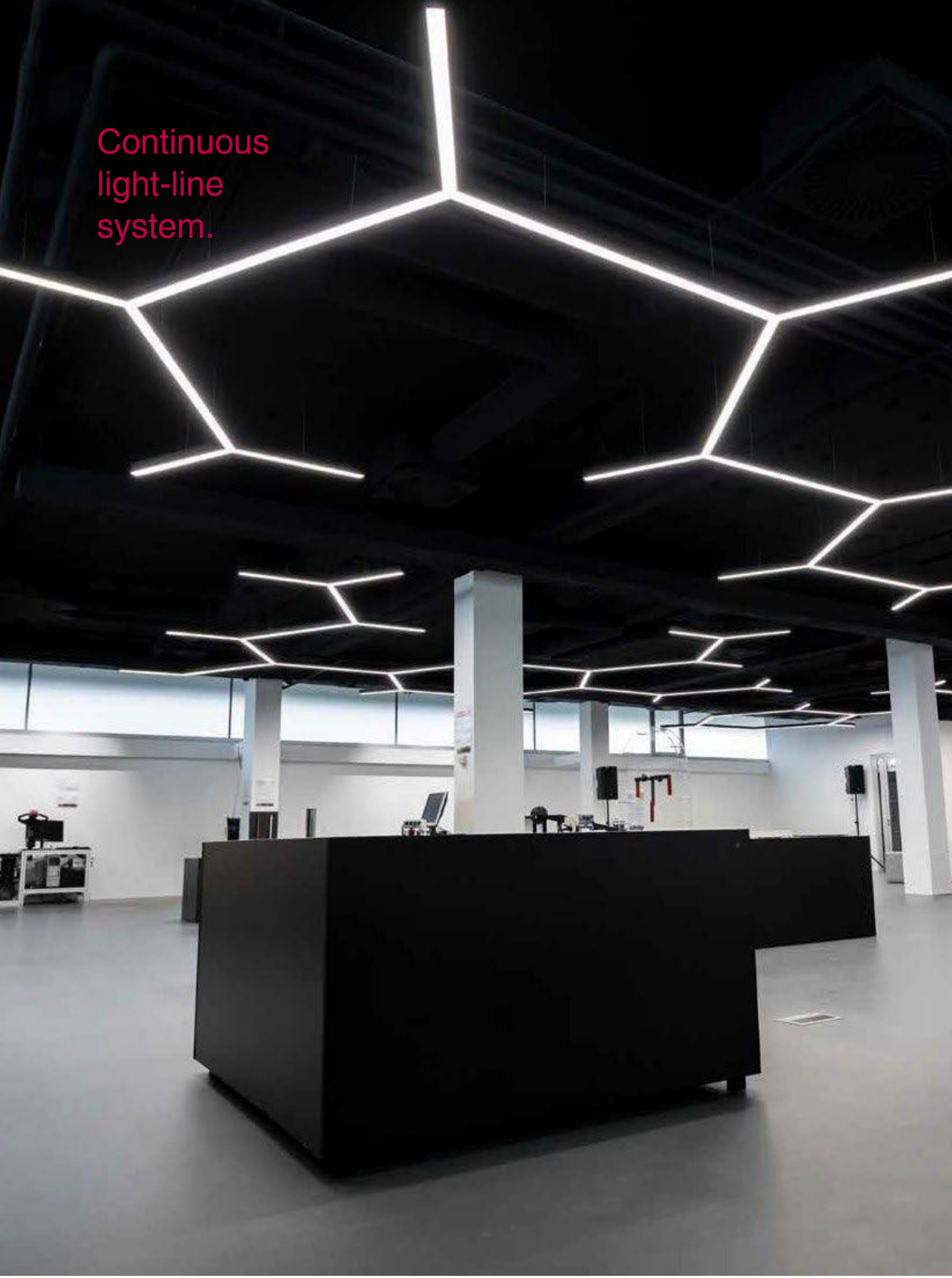


PROFILES

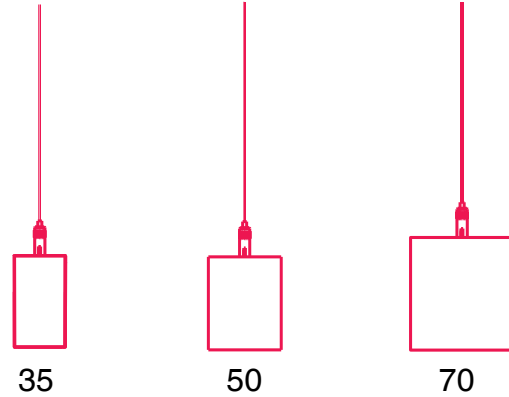
Single luminaires and light-line systems



Continuous
light-line
system.

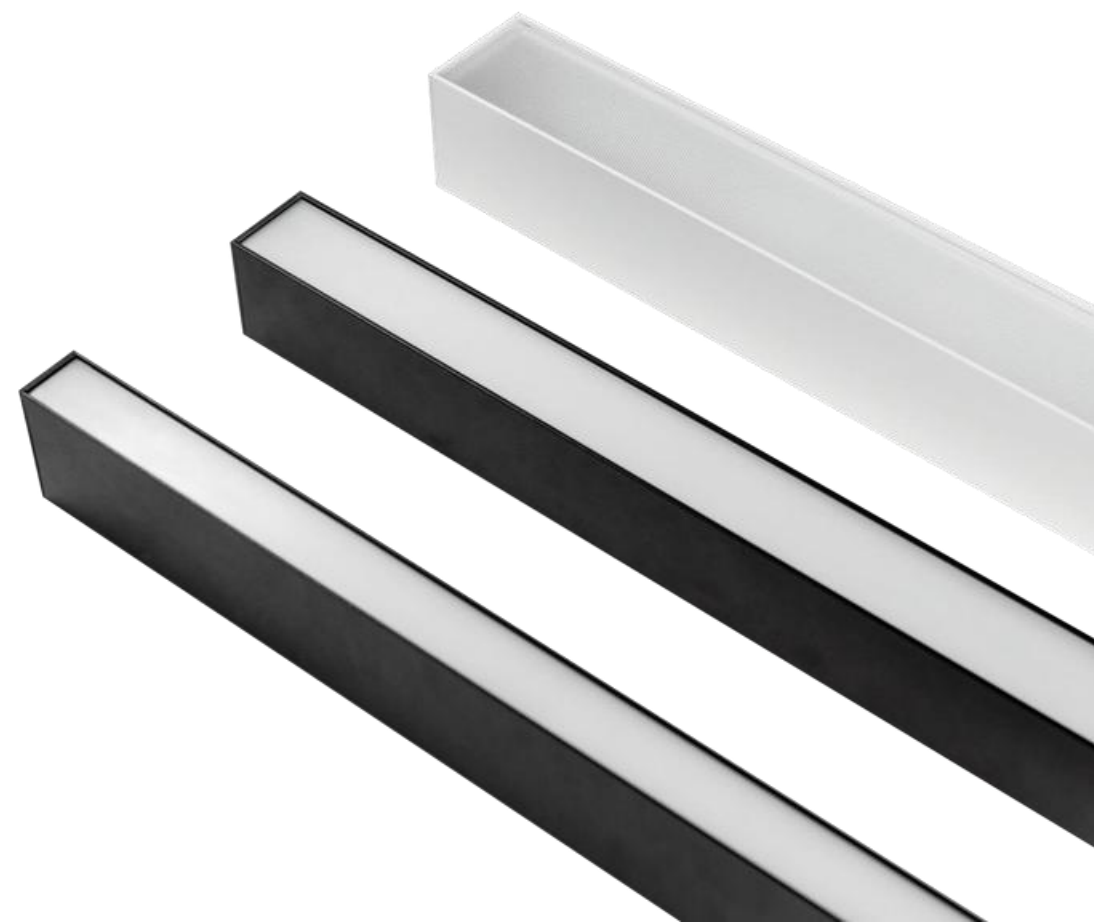


PROFILES



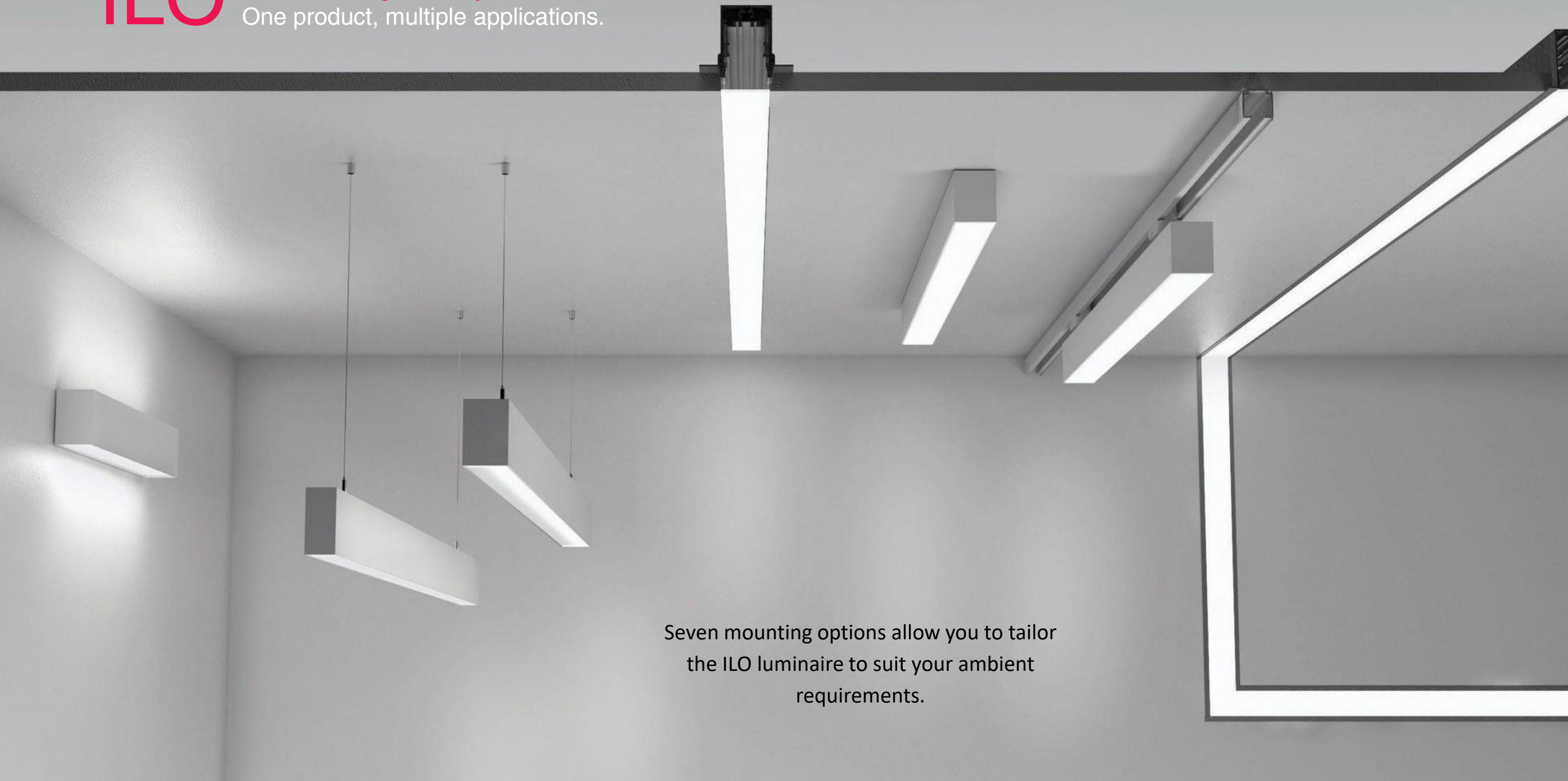
ILO

One product,
multiple applications.



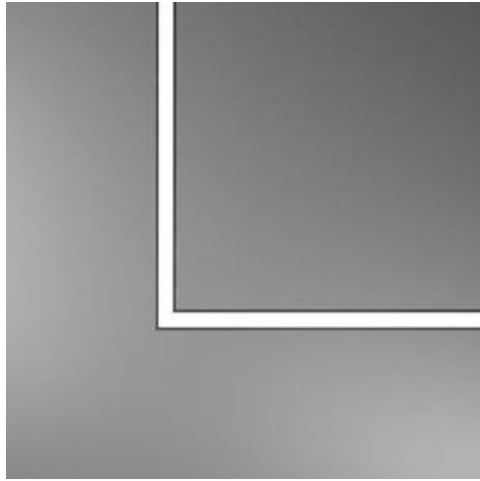


Continuous light-line system.
One product, multiple applications.

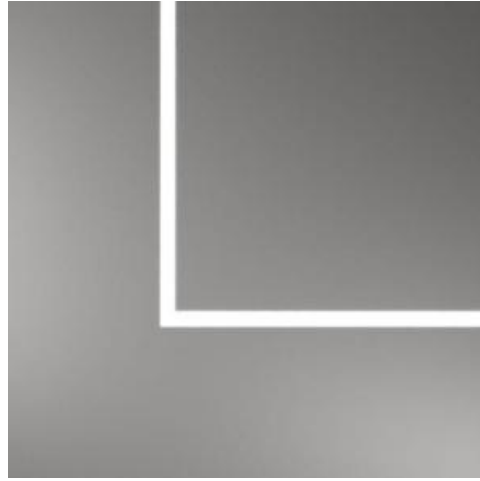


Seven mounting options allow you to tailor
the ILO luminaire to suit your ambient
requirements.

RECESSED
WITH TRIM



RECESSED
TRIMLESS



CEILING SUSPENSION
SYSTEM (T-BAR)



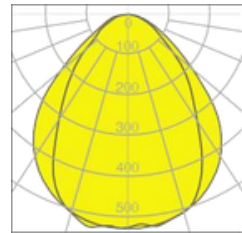
CEILING



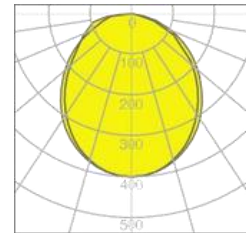
PENDANT



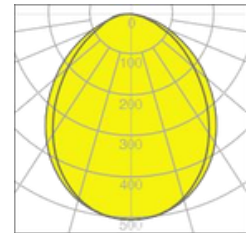
PENDANT DIRECT/INDIRECT



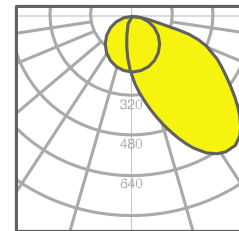
Prismatic



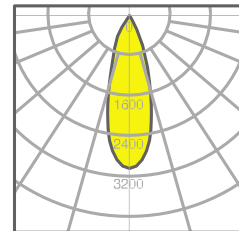
Opal



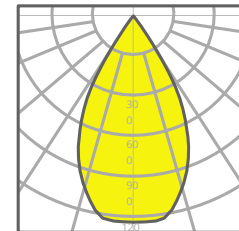
Nero



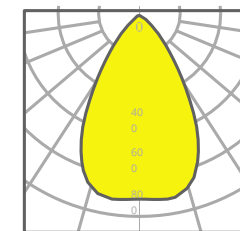
Asymmetric



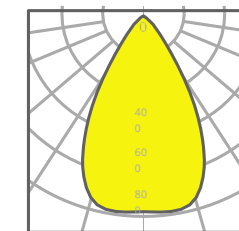
Modular narrow (30°)



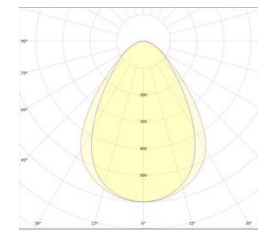
Modular wide (60°)



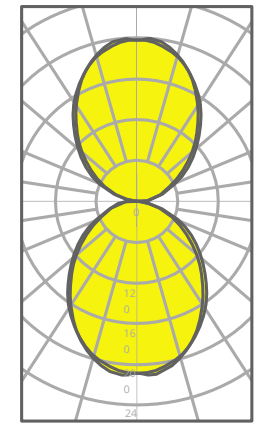
Office
white



Office
black



Office basic



Direct /
Indirect

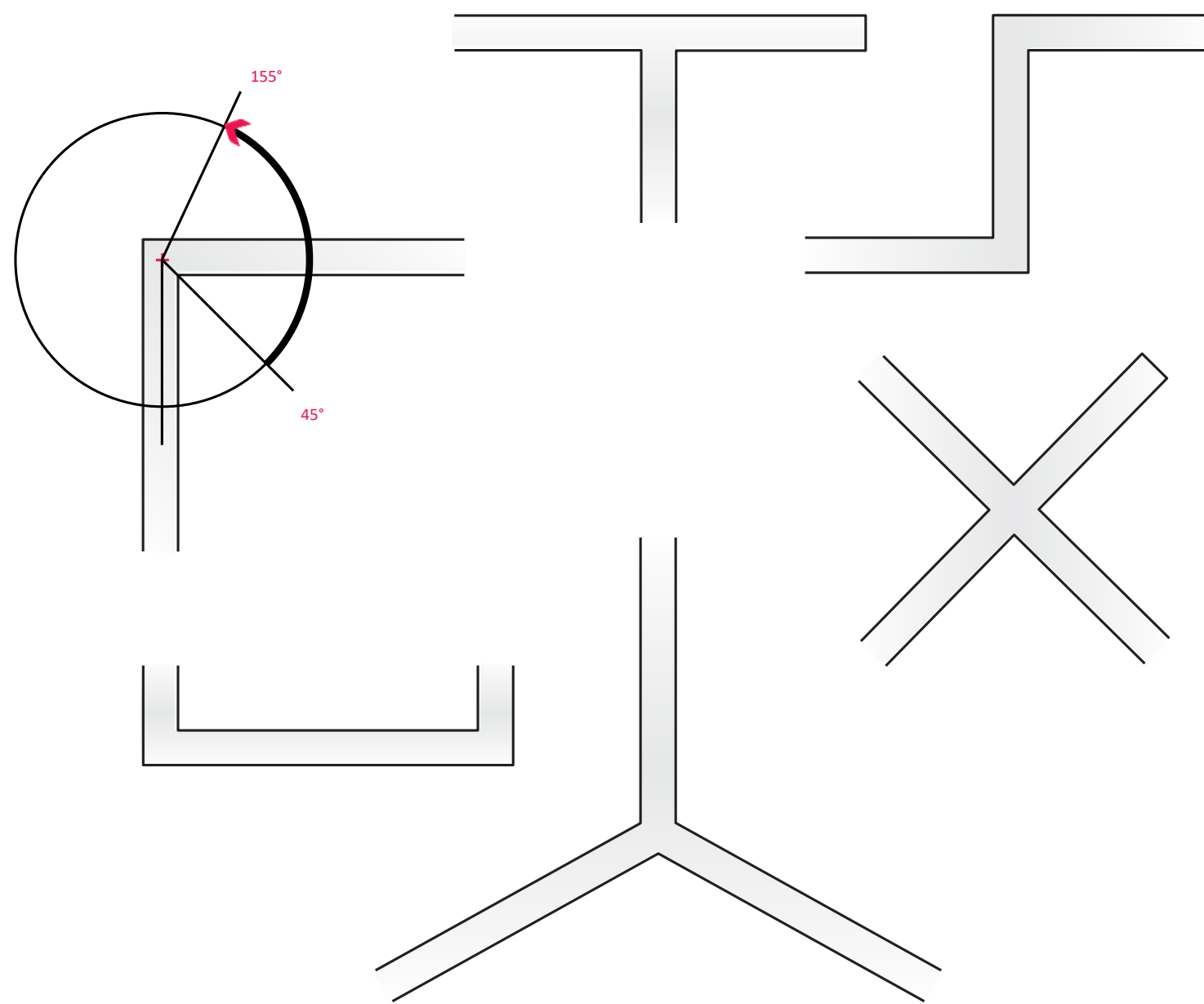



LINES ILO

Configure your continuous light-lines and create unique lighting applications.



PROFILES





Modular optic
(30°, 45°, 60°)
Aesthetic appeal.
Low glare. White
and narrow light
distribution.

Opal optic
High-quality PMMA diffusor
for uniform light distribution.

Filler (blank section)

Prismatic optic (new U-PR optic)

Office optic

- Suitable for VDU workstations according to EN 12464-1: up to 3300 lm/m with $< 3000 \text{ cd/m}^2$ for beam angle $> 65^\circ$
- UGR < 19 / UGR < 16

ILO system combinations

The modularity of the profile system enables you to combine fixture to the interior.

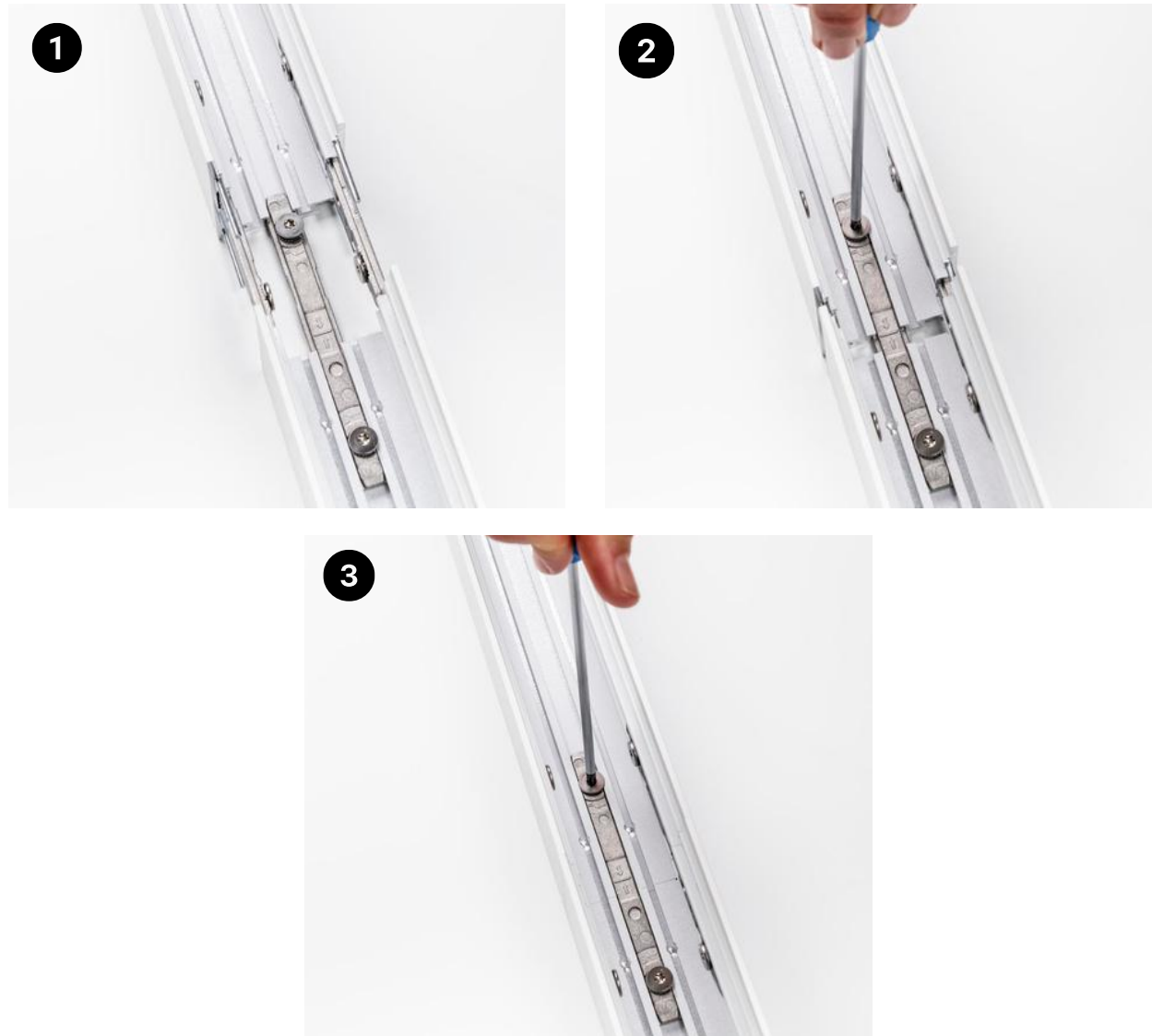
Office Basic optic

- Suitable for VDU workstations according to EN 12464-1.
- UGR < 19

ILO

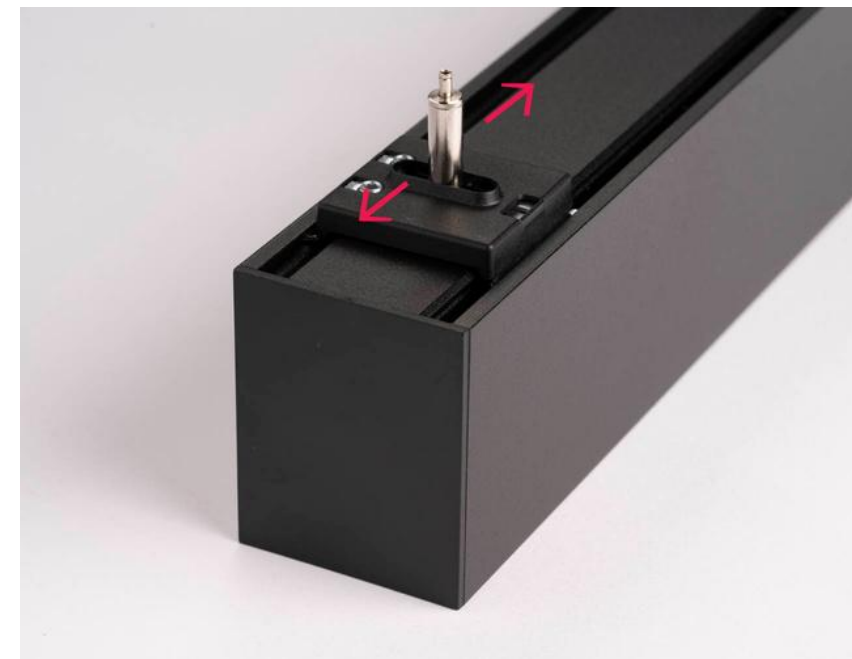
Tight connection system for no light-leakage

The slide and twist connection mechanism between two modules allows the profiles to be strongly connected which effectively prevents any light leakage.



Movable suspension points

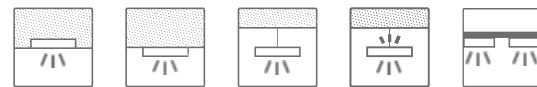
Movable suspensions on ILO luminaires offer precise alignment and easy ceiling installation, ensuring optimal flexibility in positioning during mounting.



ILO 35

Continuous light-line system.

One product, multiple applications.



- Housing: High-quality aluminium with powder coated finish in **white | black | grey | anthracite grey** fine texture
- LP: 1820-3740 lm/m; HE: 2520-5180 lm/m; HO: 3350-6900 lm/m
- LP: 16-30 W/m; HE: 22-42 W/m; HO: 31-59 W/m
- CRI > 80, CRI > 90, CRI > 95
- 2700 / 3000 / 4000 / 5000 K or TW 2700-5000 K
- Length: from 706 mm ... + 70mm ... up to 2806 mm in one piece
- Options: presence and light sensor

Prismatic



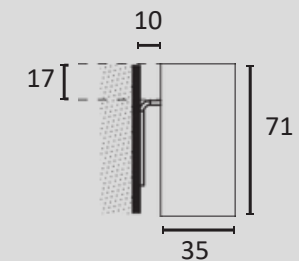
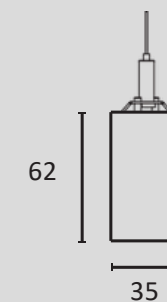
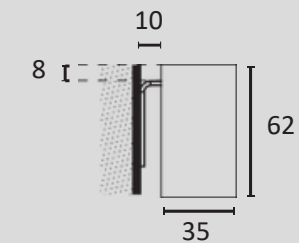
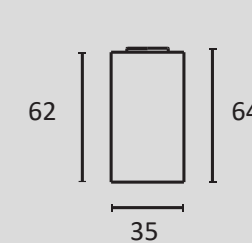
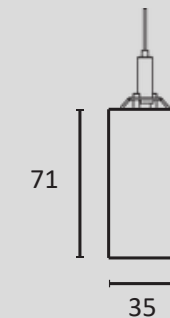
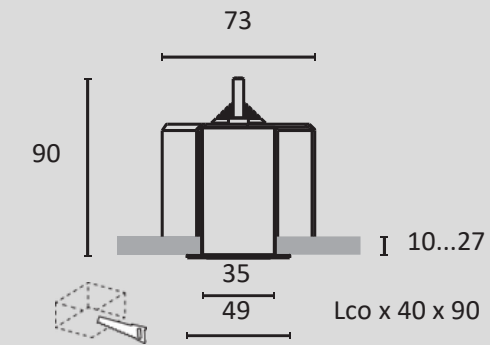
Opal



Nero



ILO Spectra:
Now available with Spectra
Technology and Tunable
White functionality.



ILO 35

with NEW OFFICE optics

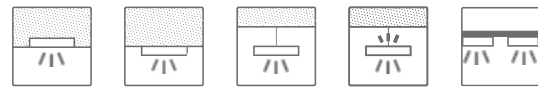
Designed for VDU workstations
EN 12464-1 compliant



ILO 50

Continuous light-line system.

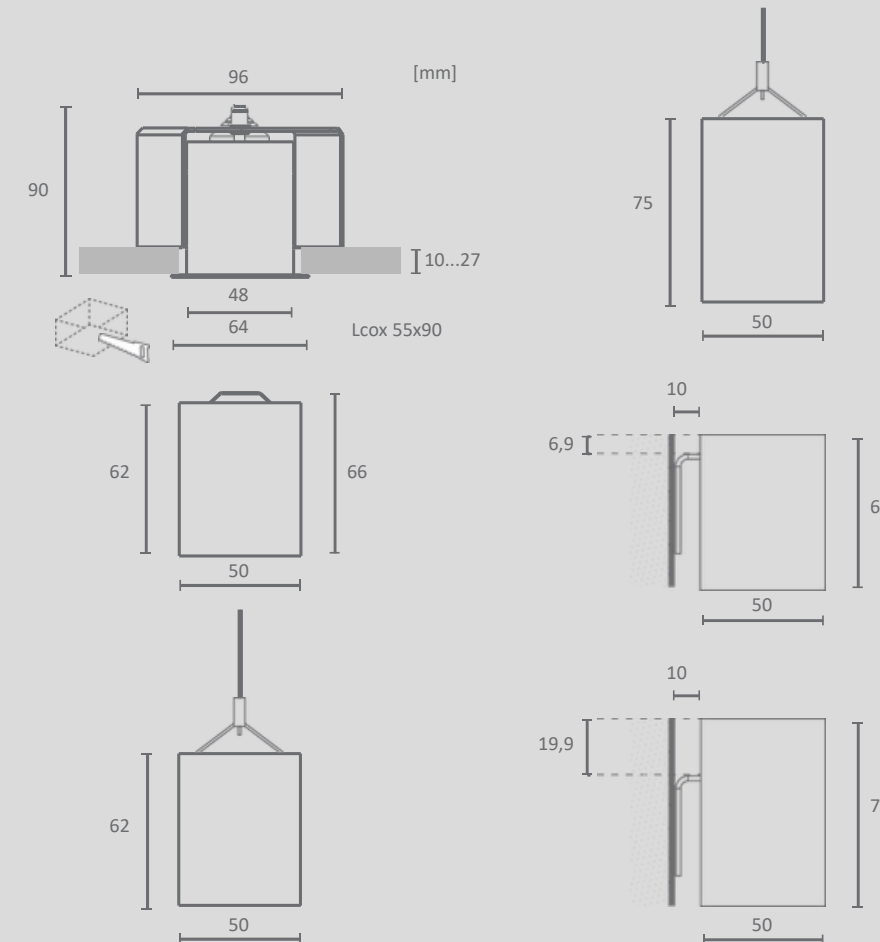
One product, multiple applications.



- Housing: High-quality aluminium with powder coated finish in **white | black | grey | anthracite grey** fine texture
- LP: 1820-3740 lm/m; HE: 2520-5180 lm/m; HO: 3350-6900 lm/m
- LP: 16-30 W/m; HE: 22-42 W/m; HO: 31-59 W/m
- CRI > 80, CRI > 90, CRI > 95
- 2700 / 3000 / 4000 / 5000 K or TW 2700-5000 K
- Length: from 706 mm ... + 70 mm ... up to 2806 mm in one piece
- Options: Presence and light sensor, Emergency: 3 h



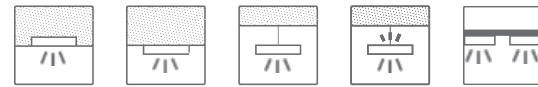
ILO Spectra:
Now available with Spectra
Technology and Tunable
White functionality.



ILO 70

Continuous light-line system.

One product, multiple applications.



- Housing: High-quality aluminium with powder coated finish in **white | black | grey | anthracite grey** fine texture
- LP: 1820-3740 lm/m; HE: 2520-5180 lm/m; HO: 3350-6900 lm/m
- LP: 16-30 W/m; HE: 22-42 W/m; HO: 31-59 W/m
- CRI > 80, CRI > 90, CRI > 95
- 2700 / 3000 / 4000 / 5000 K or TW 2700-5000 K
- Length: from 706 mm ... + 70mm ... up to 2806 mm in one piece
- Options: Presence and light sensor, Emergency: 3 h*

Dropped opal and dropped prismatic



The optic hangs 10mm out from the luminaire's body and delivers ambient illuminance. Available for ceiling, pendant and recessed mounting versions.

Prismatic



Opal



Nero



Asymmetric

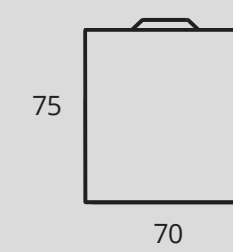
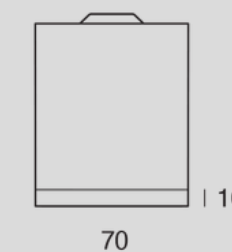
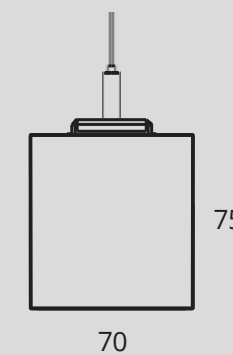
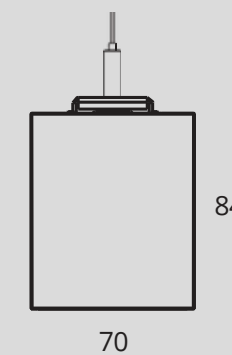
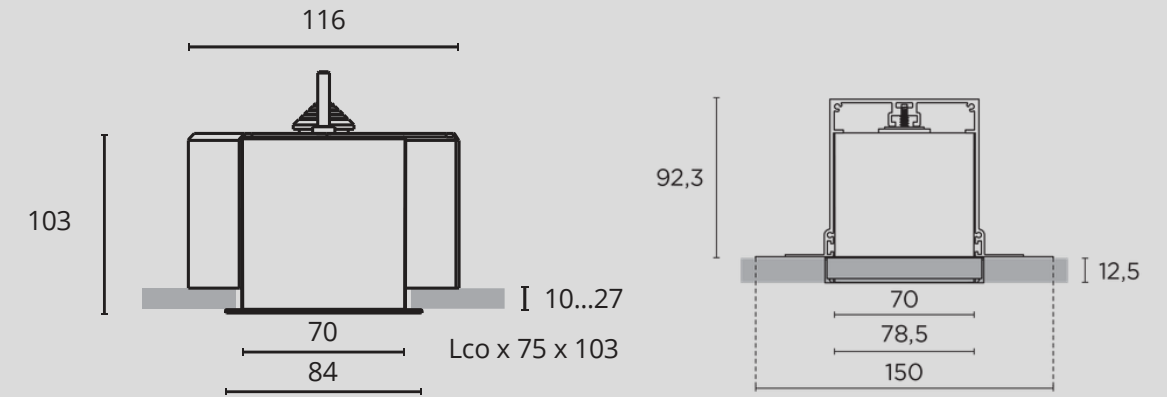


Dropped Opal



ILO Spectra:
Now available with Spectra
Technology and Tunable
White functionality.

SunLike
Powered by 



ILO curve with NEW RADIUS

Soft lines, optimized efficiency

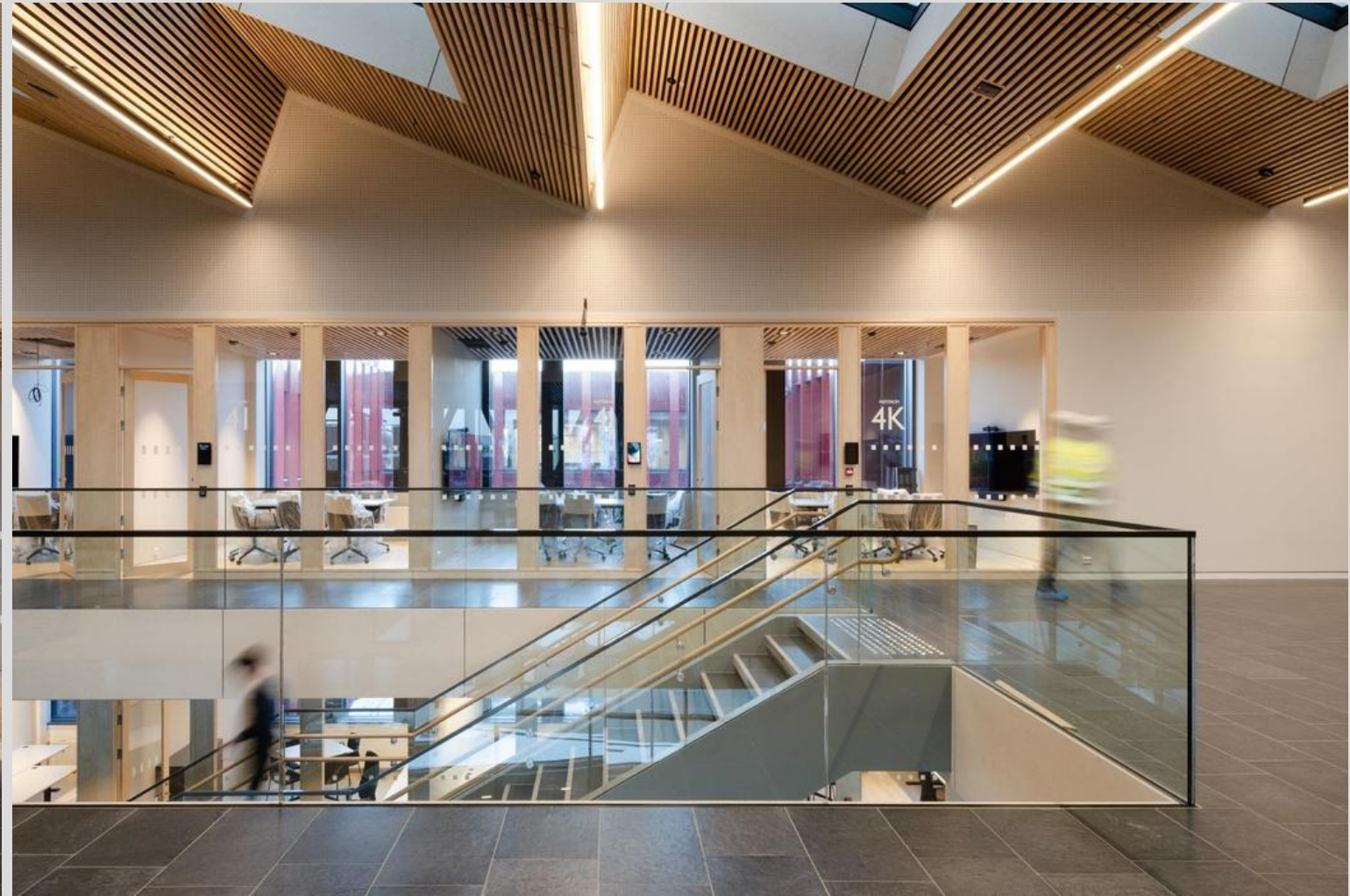
ILO Curve combines refined design with technical precision in a curved lighting profile. Available in straight and curved sections, it lets you craft unique lighting compositions perfectly tailored to your space.



ILO - nero and modular optic combination



PROJECT: Manila, Philippines
PRODUCTS: ILO System with black opal and modular optics



PROJECT: Sandnes Town Hall, Norway
ARCHITECT: Code of Practice Architects GmbH
Berlin LIGHTING DESIGN: SML Lighting
PRODUCTS: ILO Pendant Direct/Indirect with
Helvar sensor Active+, ILO Ceiling



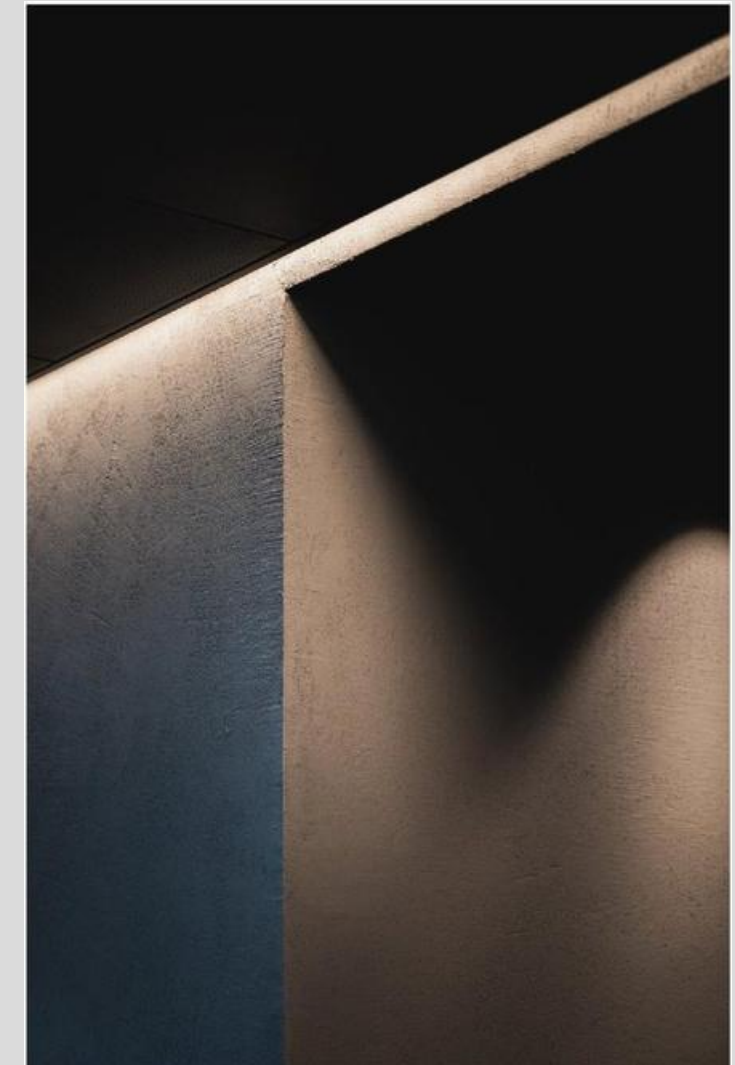
LIGHTING DESIGN: Cundall Light4
ARCHITECT: Nettleton Tribe
PHOTOS: Tyrone Branigan
Photography AWARD: LiDA Award of
Excellence at 2019 IESANZ Lighting
Design Aw

ILO SYSTEM and IKAR RECESSED



Project: Interior office refurbishment at Blue Oceans Gaming, Slovenia
Products: ILO System, IKAR Recessed
Photography: Uroš Rojc

ILO SYSTEM and ILO MINI

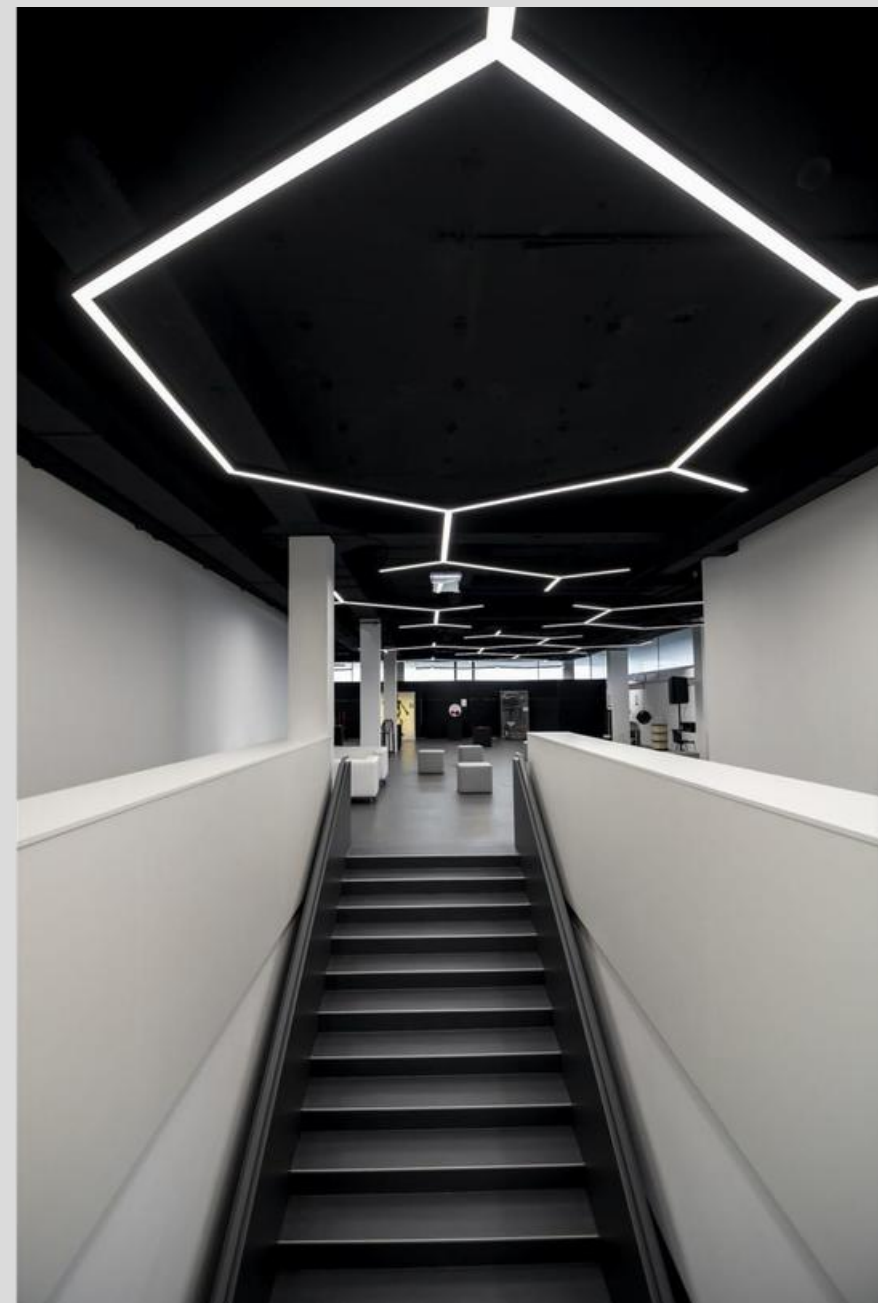


PROJECT: DEG8, Oslo, Norway
LIGHTING AND DISTRIBUTION: SML Lighting
LED Luks' PRODUCTS: ILO Ceiling System, Customized length (440mm) of ILO MINI with modular optic PHOTOGRAPHER: Dag Sandven



PROJECT: Amplifier Game Invest
Office ARCHITECT: Megaron
Architects ELECTRICAL
CONSULTANT: AFRY ELECTRICAL
INSTALLER: Elbyggen
DISTRIBUTOR: Annell Ljus+ Form AB





PROJECT: Xcenter – center for crative practices

Nova Gorica – EU capital of Culture 2025

SHAPES^{ILO}

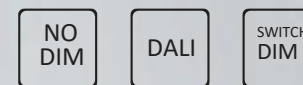


Quadro

Dimensions

Rectangular: 900x1500, 900x1800,
900x2400, 1200x1500, 1200x1800,
1200x2400 mm

Square: 600X600, 900X900,
1200X1200, 1500X1500, 1750X1750 mm

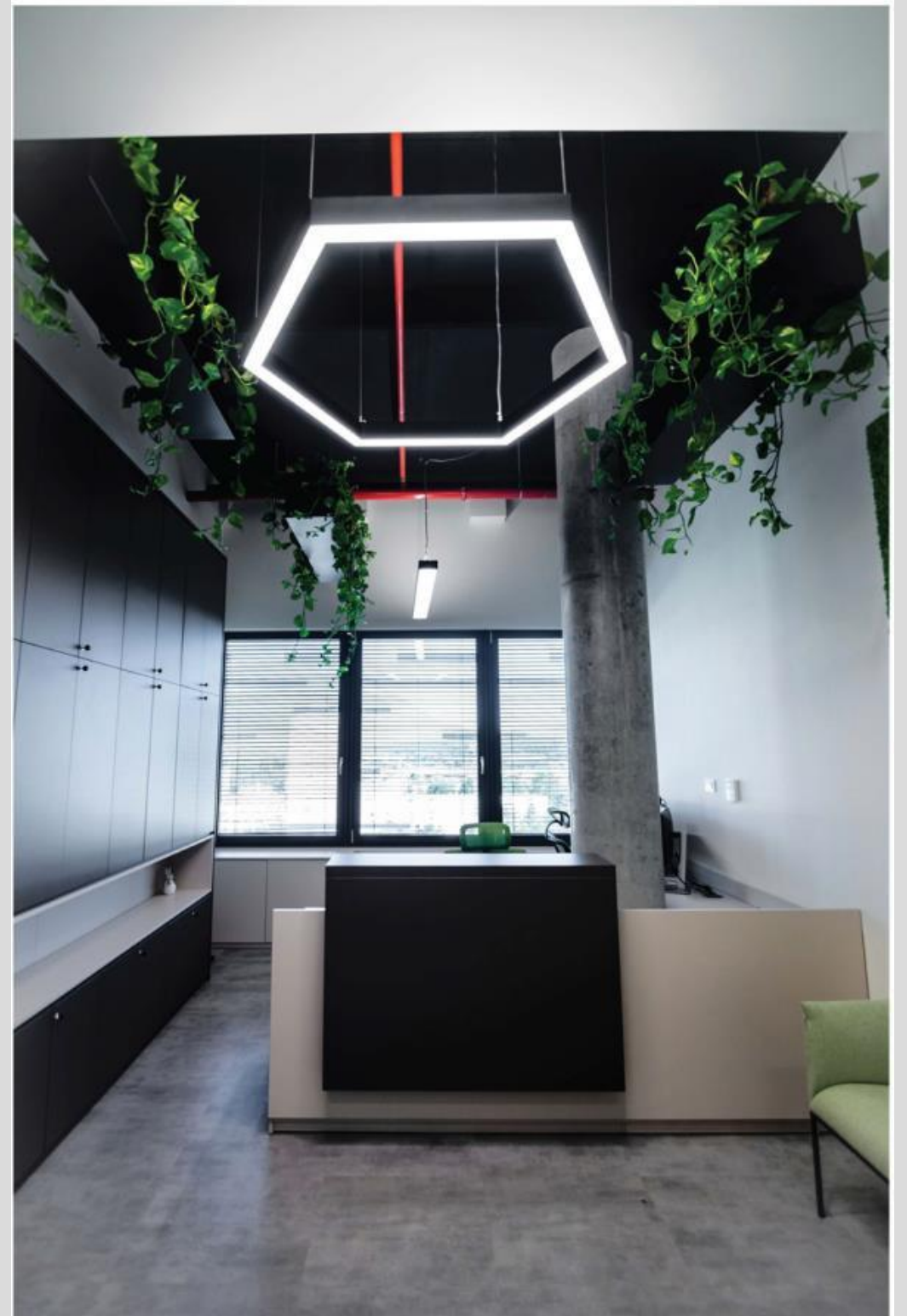


Hexagon

Dimensions

780, 1200, 1480,
1760 mm

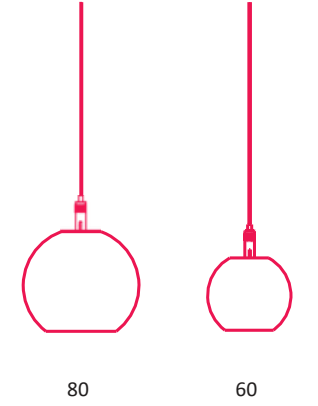
SHAPES ILO/ORA



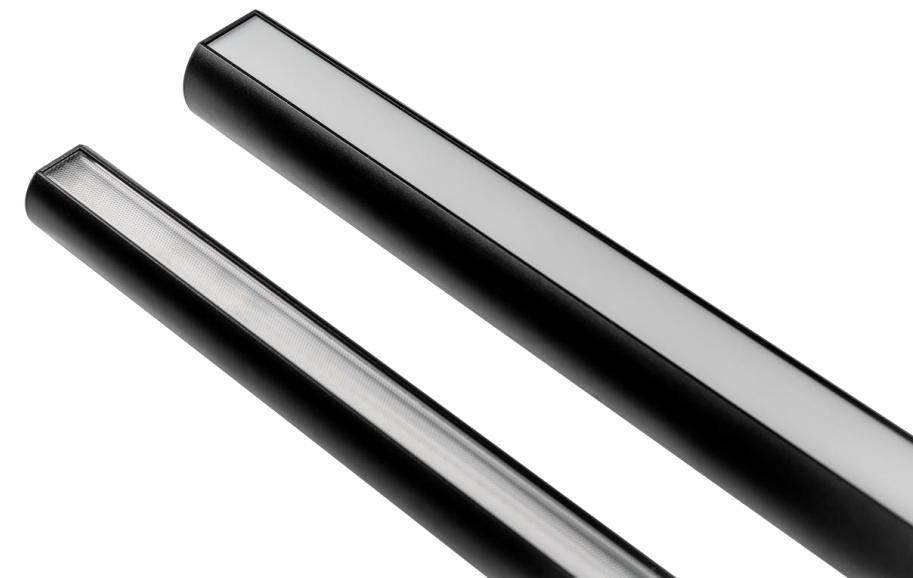


ORA

Curved-edge linear profile



- Housing: High-quality aluminium with powder coated finish in **white | black | grey** fine texture or custom color
- 125 lm/W
- LP: 1820-3740lm/m; HE: 2520-5180lm/m; HO: 3350-6900lm/m
- LP: 16-30W/m; HE: 22-42W/m; HO: 31-59W/m
- CRI > 80, CRI > 90, CRI > 95
- 2700 / 3000 / 4000 / 5000 K or TW 2700-5000 K
- Optics: modular narrow/wide, opal, prismatic, nero or asymmetric



ORA



ORA



PROJECT: House of Krohn
LIGHTING DESIGN: SML Lighting AS
INTERIOR DESIGNER: KROHNARK
Product: ORA

HEXAGON^{ORA}



- Diameter:
 - 816 mm,
 - 1236 mm,
 - 1516 mm,
 - 1796 mm

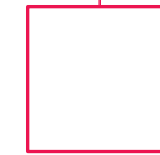
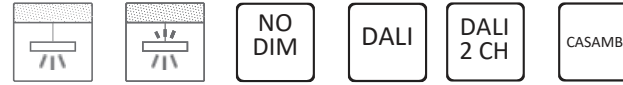


ORA HEXAGON



PROJECT: Misk School Campus, Riyadh, Saudi Arabia
ARCHITECT: Design Engine Architects
DESIGN: [Kevin Grant](#) – LIGHTALLIANCE
PRODUCTS: ILO Pendant Direct/Indirect, Ora Octagon and Ora Hexagon

PLAIN



90

- Suspended luminaire with elevated light opening
- High-quality aluminium housing with structure lacquered matt white
- Combination of different modules to a continuous light-lines system
- Length: from 798 mm ... + 70 mm ... up to 2898 mm in one piece
- LP: 1731-3840 lm/m; HE: 2400-5330 lm/m; HO: 3190-7090 lm/m
- LP: 18-32 W/m; HE: 23-45 W/m; HO: 32-63 W/m
- 130 lm/W
- CRI > 80, CRI > 90, CRI > 95
- 2700 / 3000 / 4000 / 5000 K or TW 2700-5000 K

Designed by Kai Piippo for Annell.



Prismatic



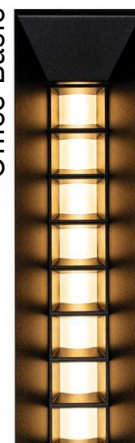
Opal



Modular



Office Basic



Office



Now available also in bronze

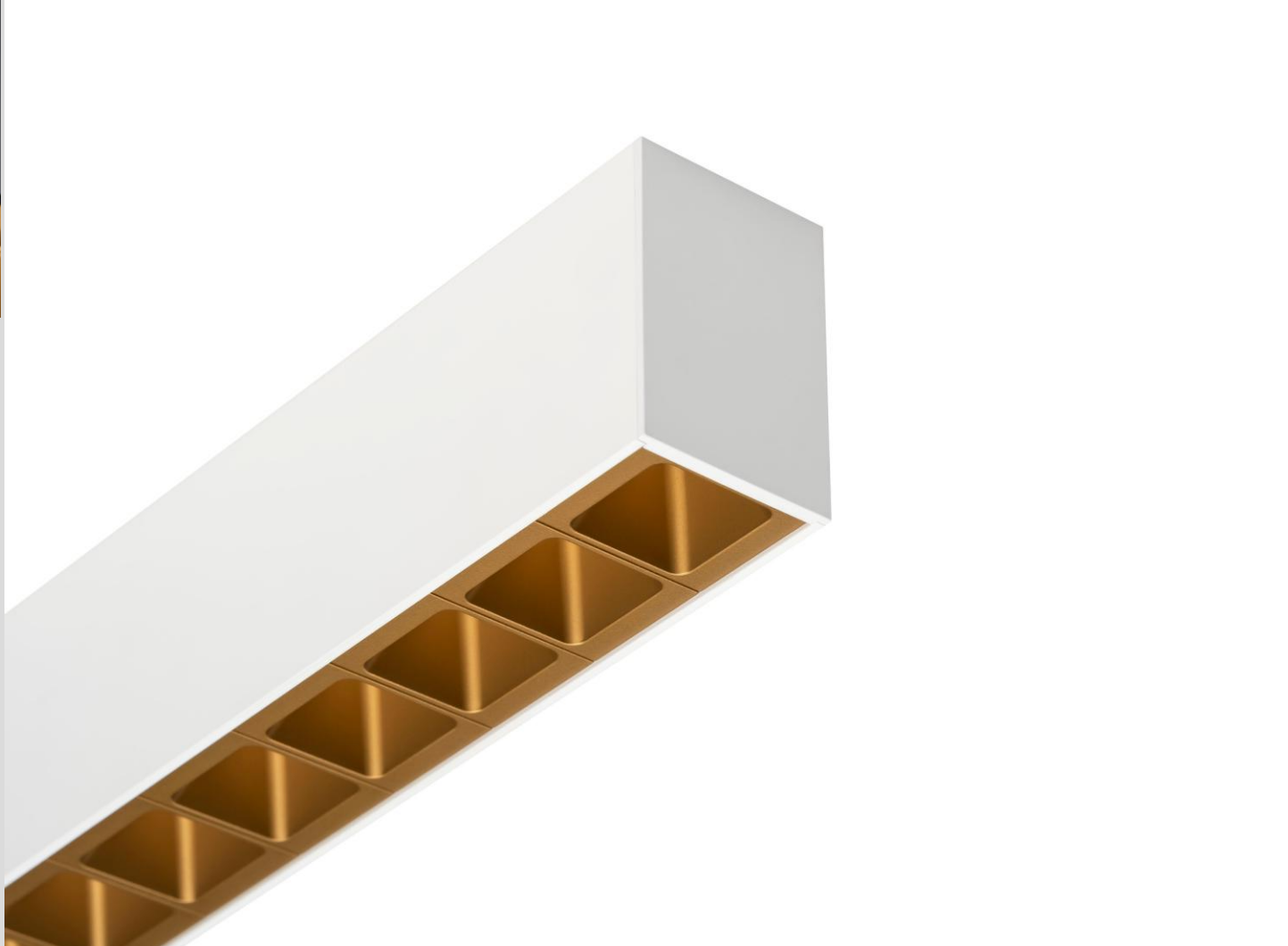
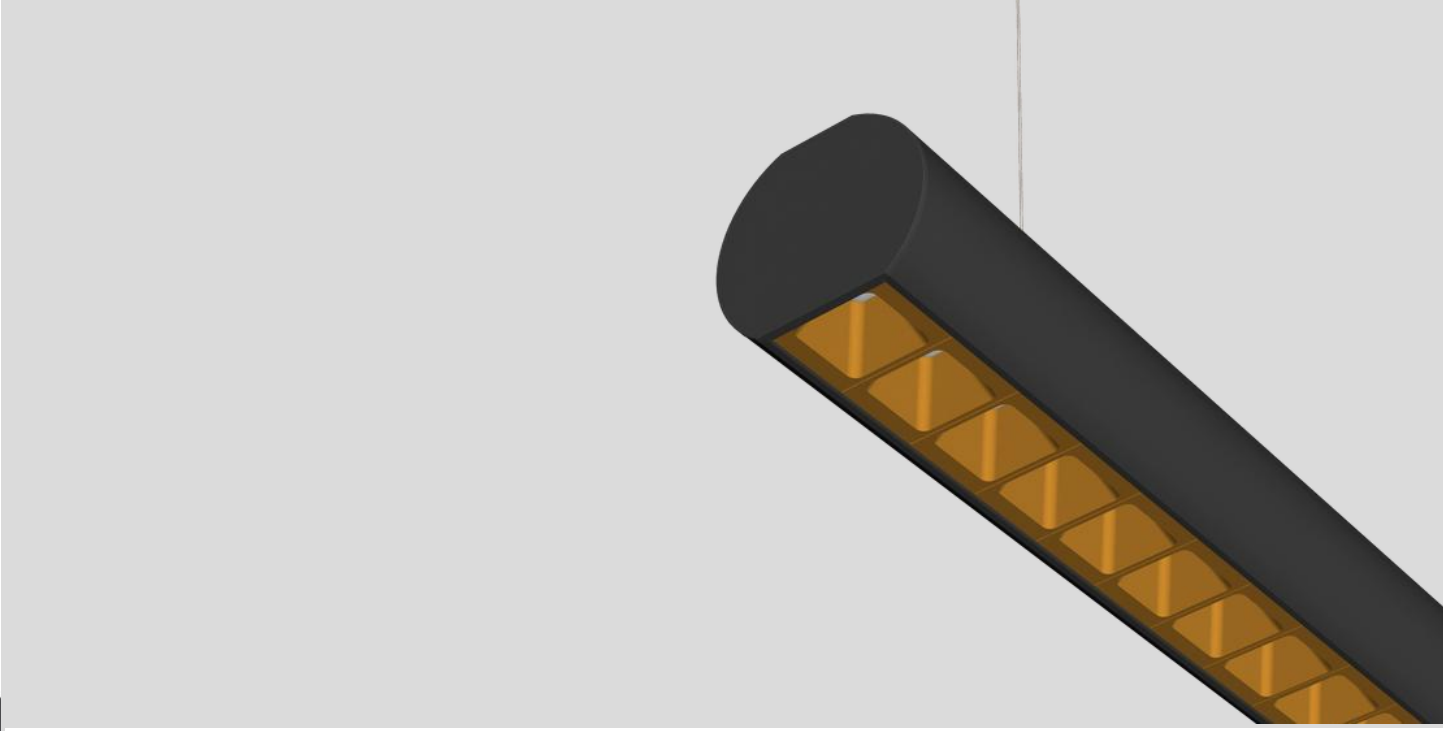
PLAIN
RECESSED



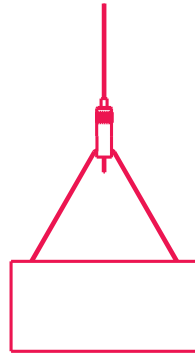
PLAIN



ILO, ORA and PLAIN
NEW MODULAR OPTICS COLOR



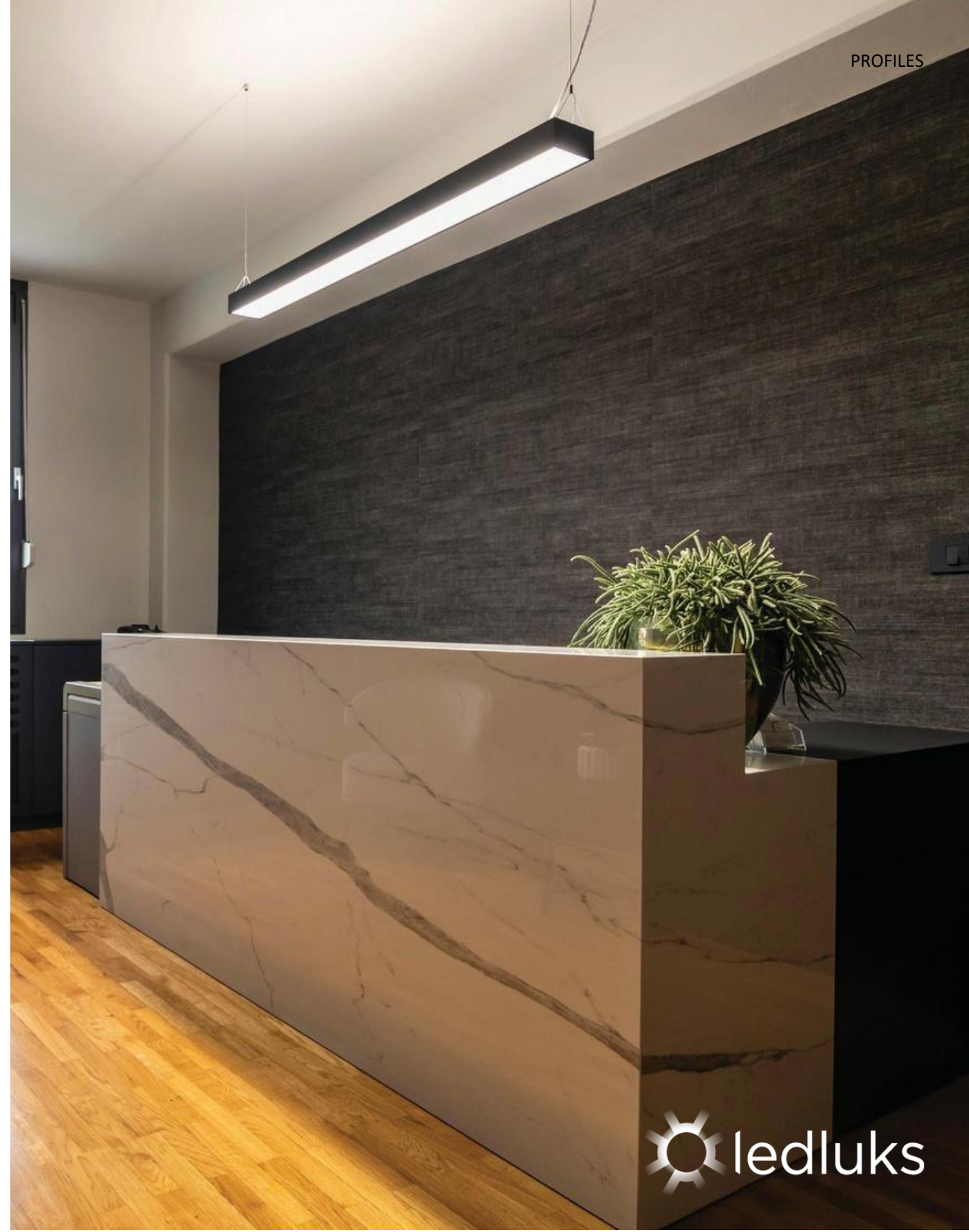
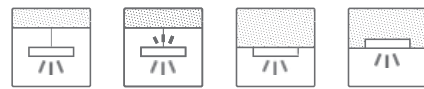
KYRA



125

Low UGR.
Ideal for offices.

- Housing: High-quality aluminium with powder coated finish in **white | black | grey** fine texture
- Length: from 726 mm ... + 70 mm ... up to 2806 mm in one piece
- UGR < 16
- LP: 1900-3750 lm/m; HE: 2640-5200 lm/m; HO: 3510-6920 lm/m
- LP: 16-30 W/m; HE: 22-42 W/m; HO: 31-59 W/m
- 2700 / 3000 / 4000 / 5000 K or TW 2700-5000 K
- CRI > 80, CRI > 90, CRI > 95



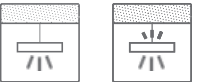
KYRA



CAMALEO

BY BOJAN CEGLAR

MAKE IT YOUR WAY

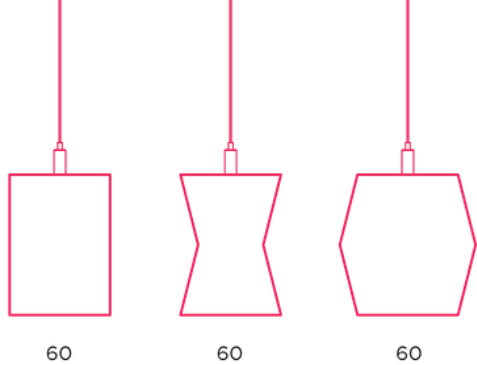


NO DIM

DALI

DALI 2 CH

CASAMBI



- Housing: High-quality aluminium with powder coated finish in **white | black | bronze** fine texture
- LP: 1820-3740; HE: 2520-5180; HO: 3350-6900 lm/m
- LP: 16-30; HE: 22-42; HO: 31-59 W/m
- 2700 / 3000 / 4000 / 5000K or TW 2700 to 5000 K
- CRI > 80, CRI > 90, CRI > 95
- MacAdam Step 3
- L80 B20 at 100.000h, Ta=25°C ambient temperature
- Dimensions: 1126 / 1266 / 1406 / 1546 / 2246 mm in a single unit

DOUBLE-SIDED PANELS AVAILABLE IN THE FOLLOWING MATERIAL COMBINATIONS:



Rust (cor-ten)

Carbon



Cocoa Oak

Light Oak



Fashion Wood

Carbonized Wood



Velvet

Concrete



Fossil Maple





CAMALEO



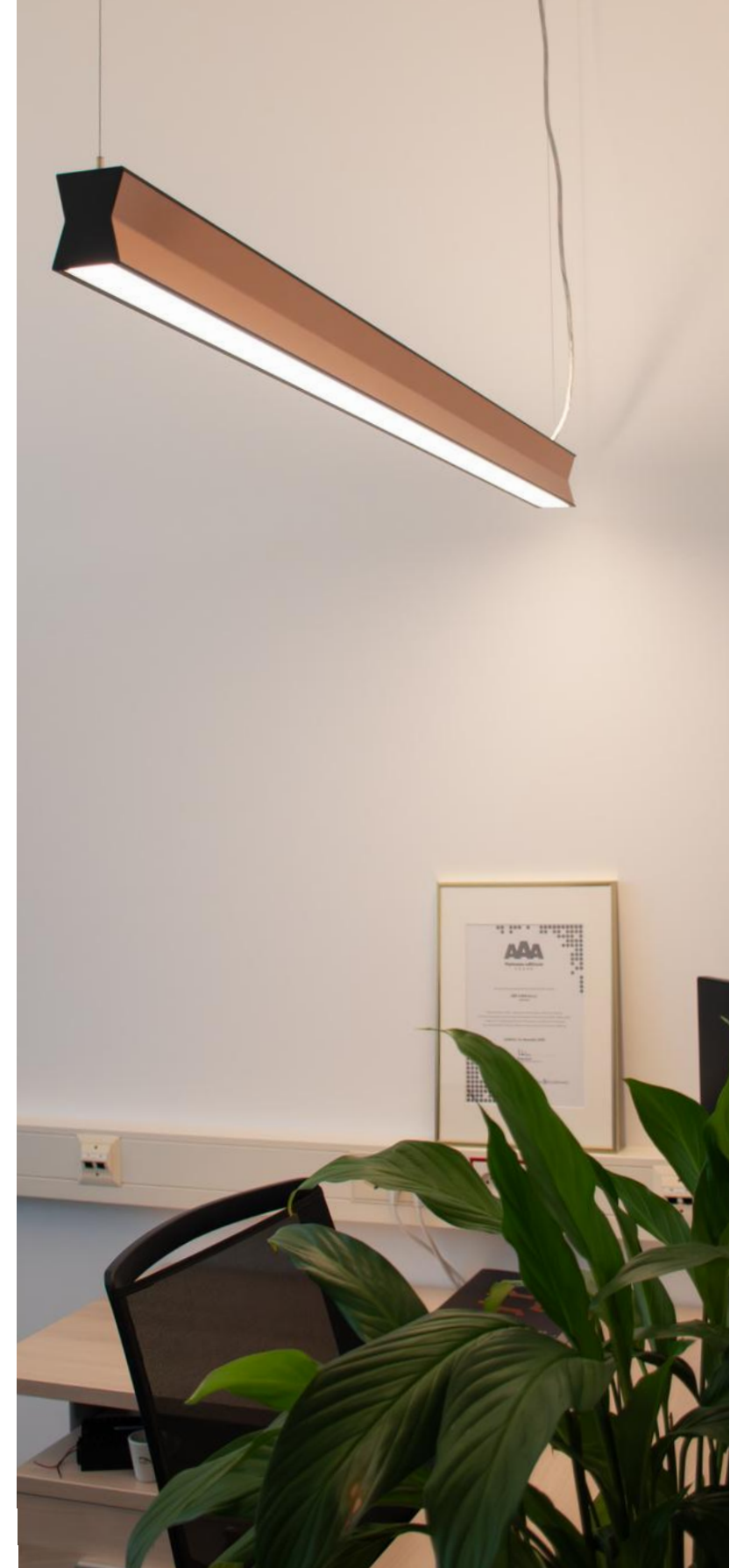
GOOD DESIGN
GERMAN DESIGN AWARD WINNER 2025



Curved outward



 ledluks



MIDI

Minimal by Design.

Remarkable by Performance.

Workstation compliant (EN 12464-1)

UGR<16



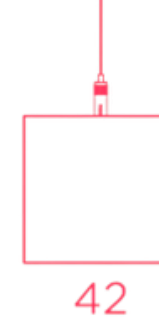
17

MIDI.I



37

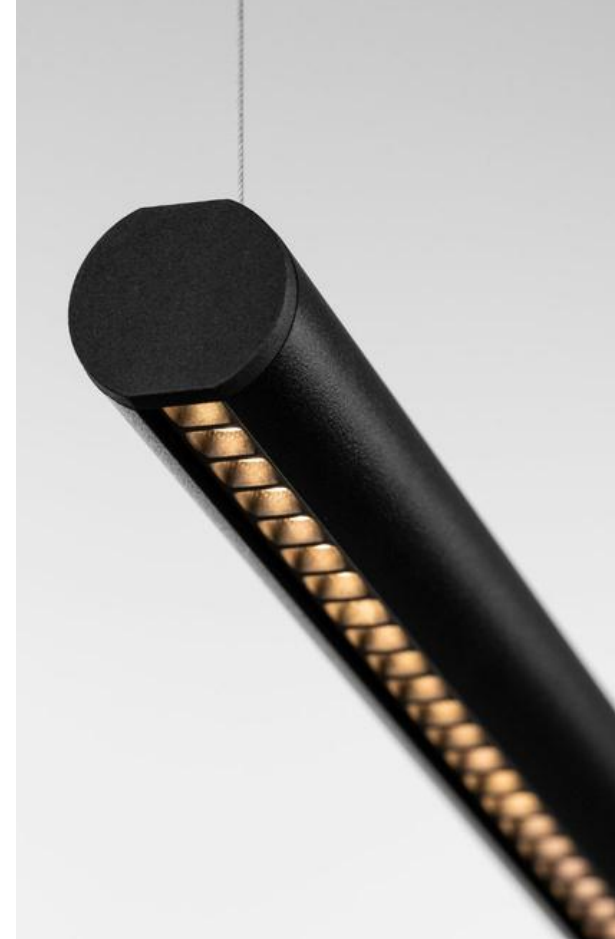
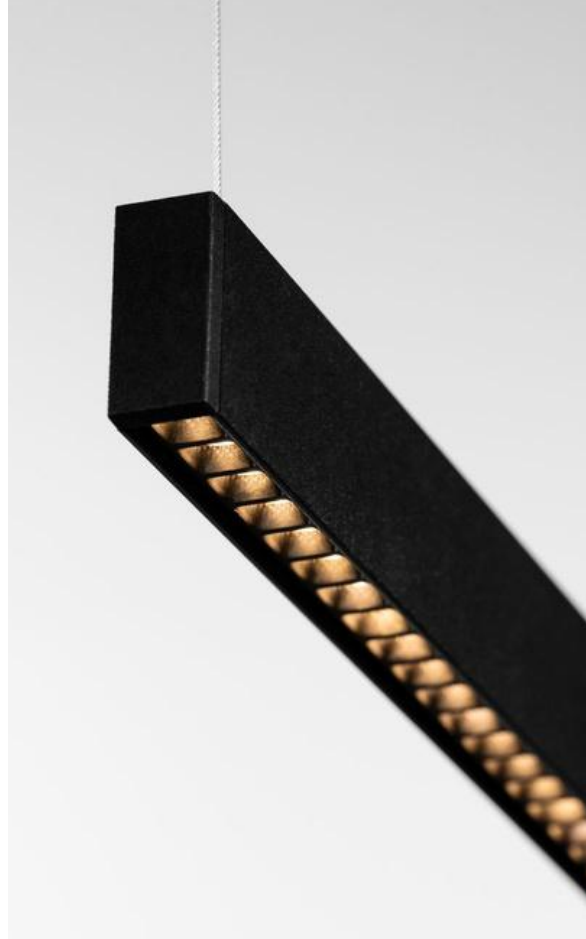
MIDI.O



42

MIDI.P

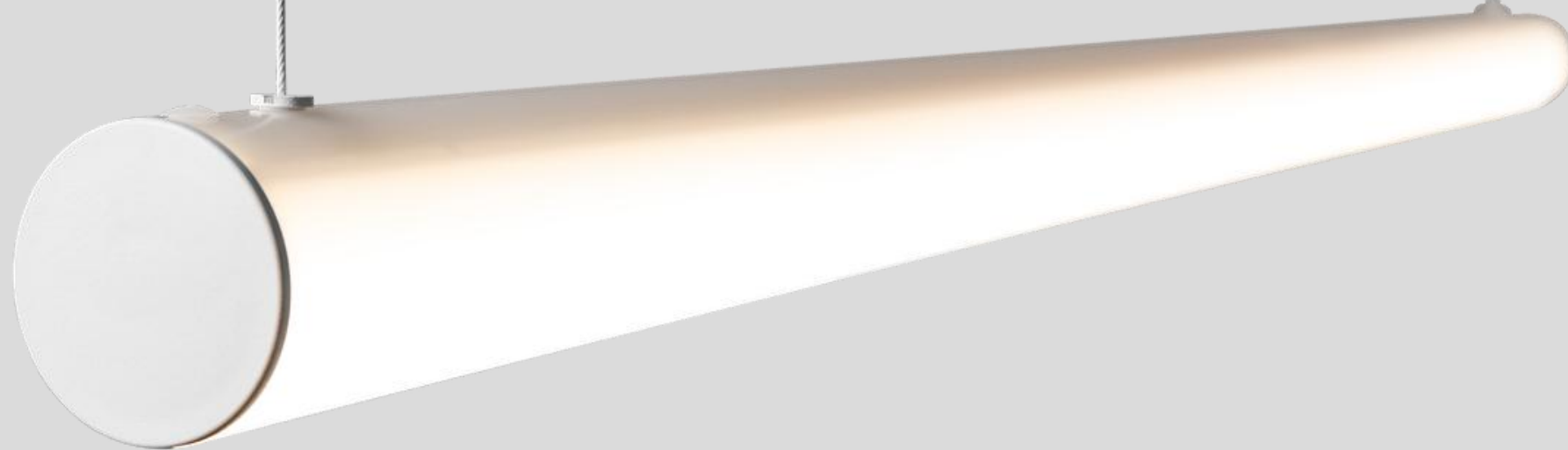




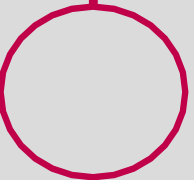
- 4100 lm/m
- 44 W/m
- 3000 / 4000 K
- CRI > 90
- L80 B10 at 50.000h,
Ta=25°C ambient temperature
- 60-degree beam angle



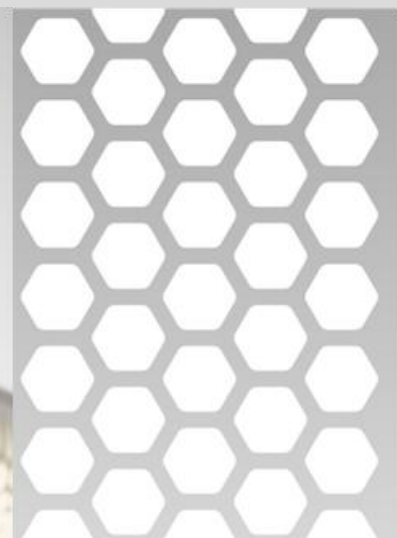
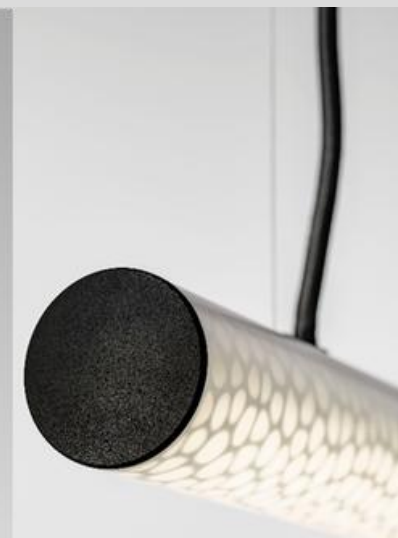
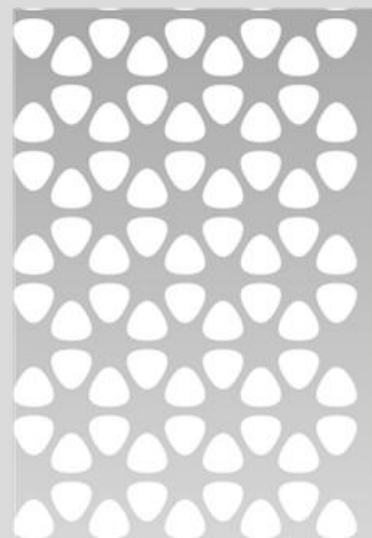
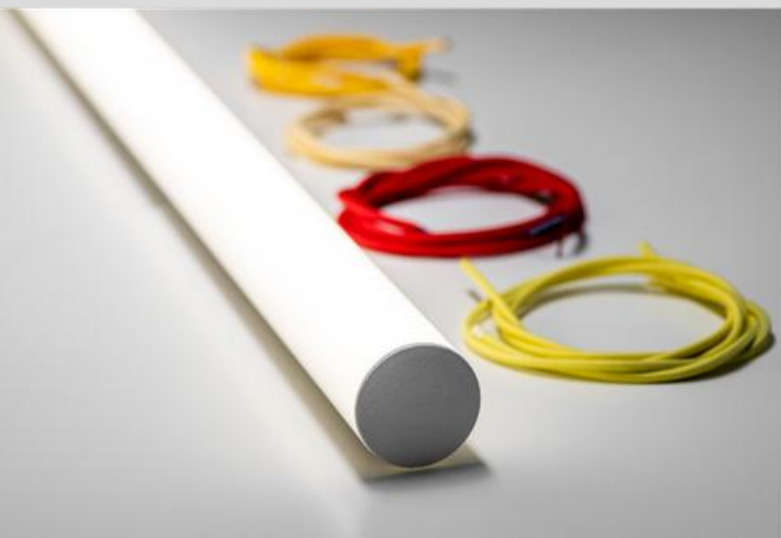
TUBE **LENE** ART



- HE: 2950 lm/m
- 22 W/m
- 2700 / 3000 / 4000 / 5000 K
- CRI > 80 / CRI > 90
- MacAdam Step 3
- Length: from 1408 ... +70 ... up to 2808 mm in single piece or continuous light-line system
- **Colored end-caps and cables:** black, white, red, yellow



60



LENE TUBE



PROJECT: Eterno, Frankfurt (Eterno Health)
LIGHTING DESIGN: ELLUX, @Arthur Huesken
ARCHITECT: Ioannis Kelpetzidis
GENERAL CONSTRUCTOR: UNDKRAUSS Bauaktiengesellschaft
PRODUCT: LENE Tube

INNOVATION
FLEXIBILITY
FREEDOM

DRY

BY OLEG COSNEANU

DRY ROD

- 805lm/m; 8W/m
- 3000 / 4000K
- CRI > 90
- MacAdam Step 3
- L80 B20 at 50.000h,
Ta=25°C ambient temperature





ROD PENDANT



ROD FLOOR



ROD WALL

INNOVATION
FLEXIBILITY
FREEDOM

DRY

BY OLEG COSNEANU

DRY DECORATIVE PANEL

- 130lm; 1,5W/spot
- 3000 / 4000K
- CRI > 90
- MacAdam Step 3
- L80 B20 at 50.000h,
Ta=25°C ambient temperature

SPOTS

- Adjustable spots can be moved $\pm 24^\circ$ to direct light exactly where it's needed.
- 36° beam angle
- The pendant and wall decorative panels include three light spots, while the floor panels features two spots.

High-end materials for the decorative panels: natural leather, solid wood, genuine marble





ROD PENDANT DECORATIVE



ROD FLOOR DECORATIVE



WALL DECORATIVE



directional light



ambient light



ambient +
directional light



DRY

LUNA

Slim round pendant
luminaire

- 91 lm/W, 14 W/m
 - 3000 / 4000 K
 - CRI > 90
 - L80 B10 at 100.000 h
- Ta=25 °C ambient temperature

BY OLEG COSNEANU





Luminaire for
a welcoming
elegance

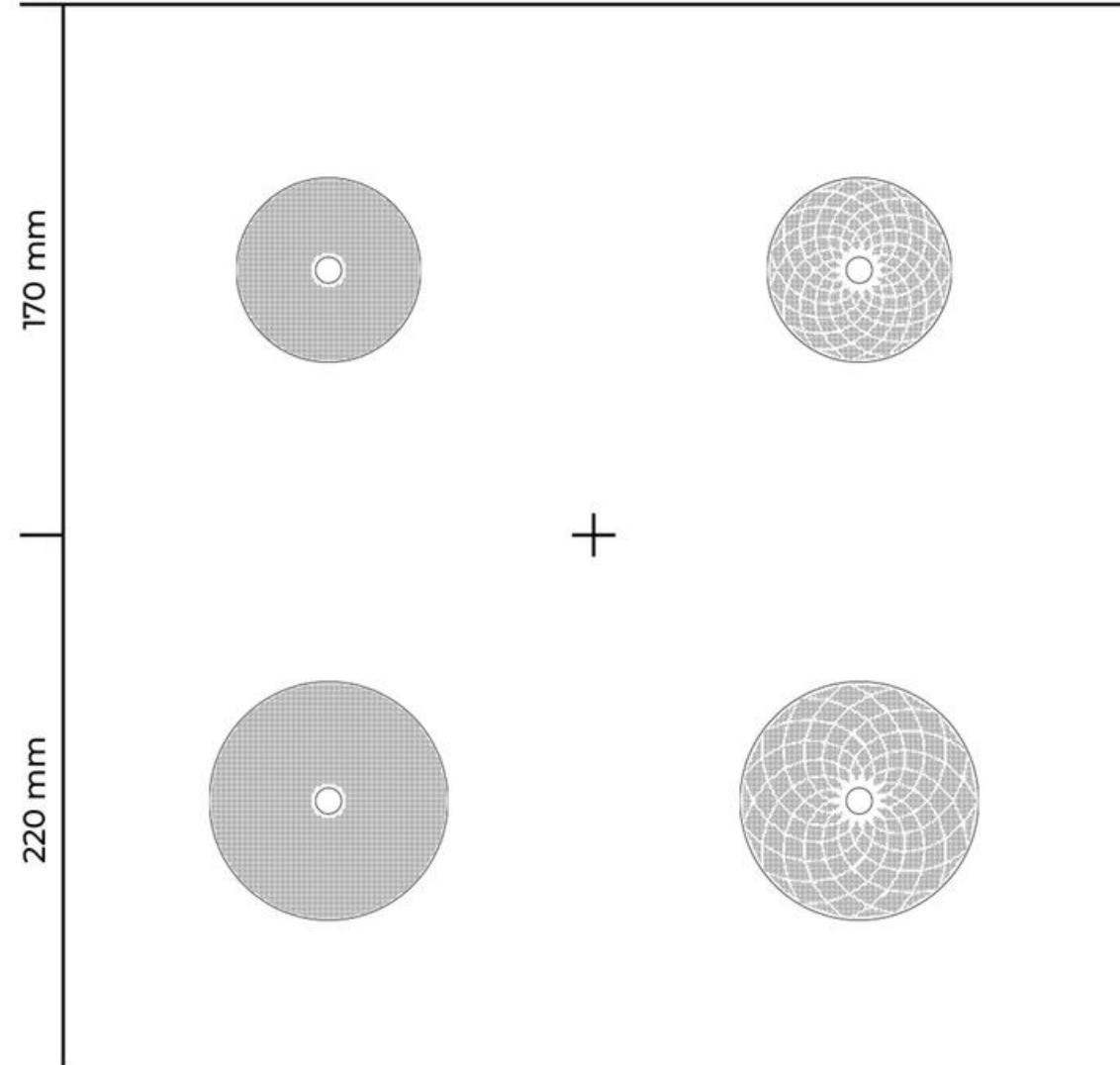
SOE

- Ring: 81 - 95 lm/W, 4-20 W
 - Spot: 83 lm/W, 1,1 W
 - 2700 / 3000 / 4000 K
 - CRI > 90
 - L80 B20 at 100.000 h
- Ta=25 °C ambient temperature

Pendant

Standard

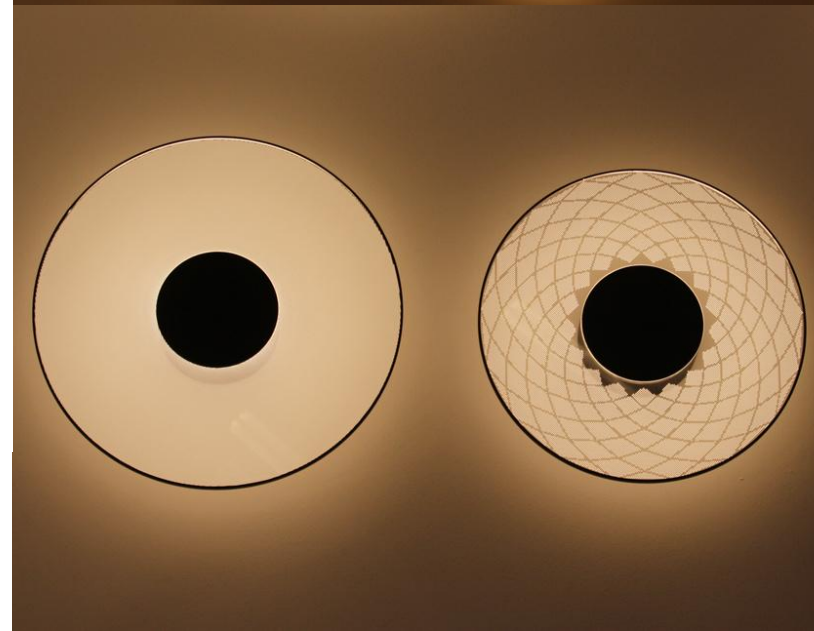
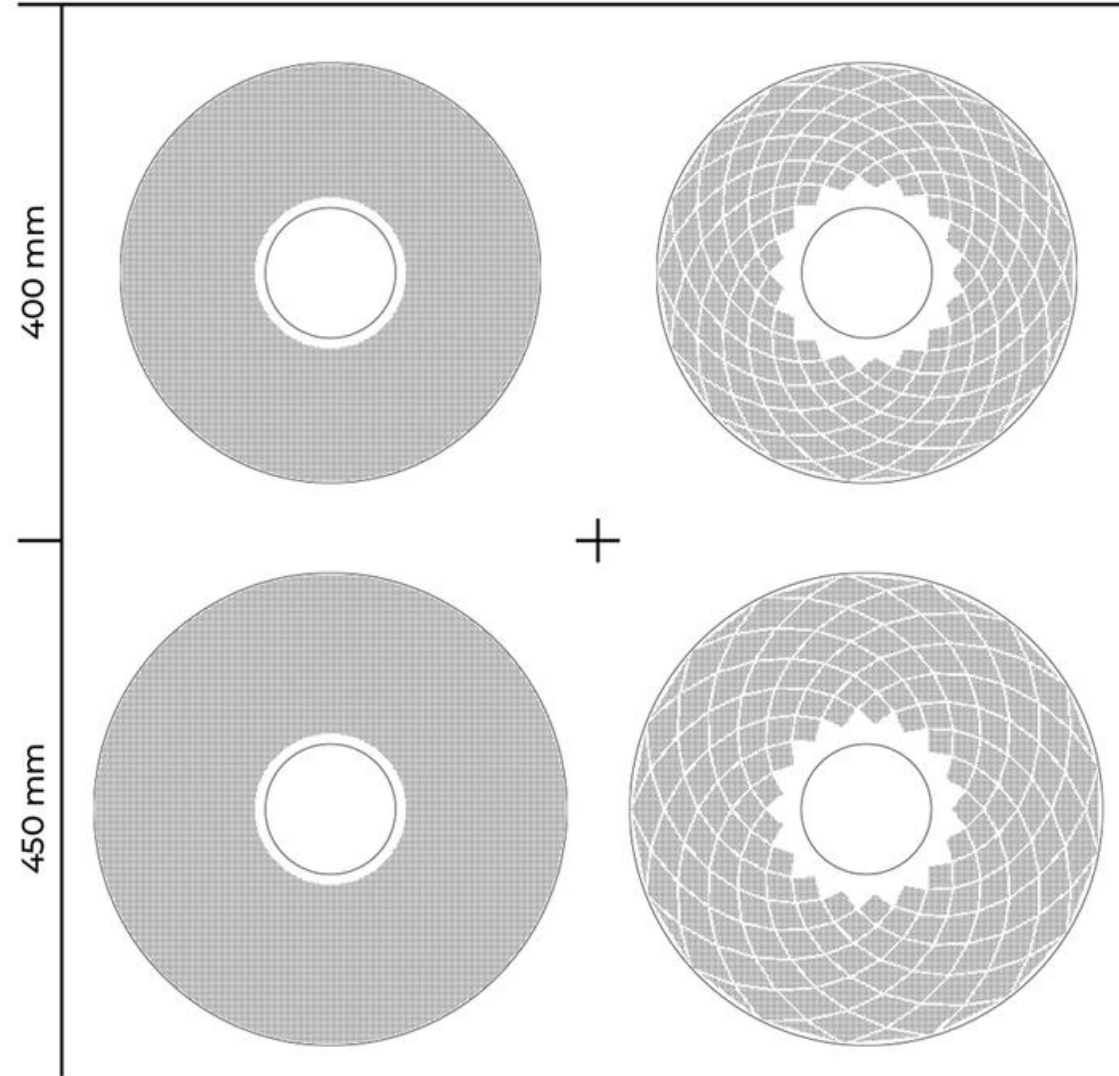
Diamond

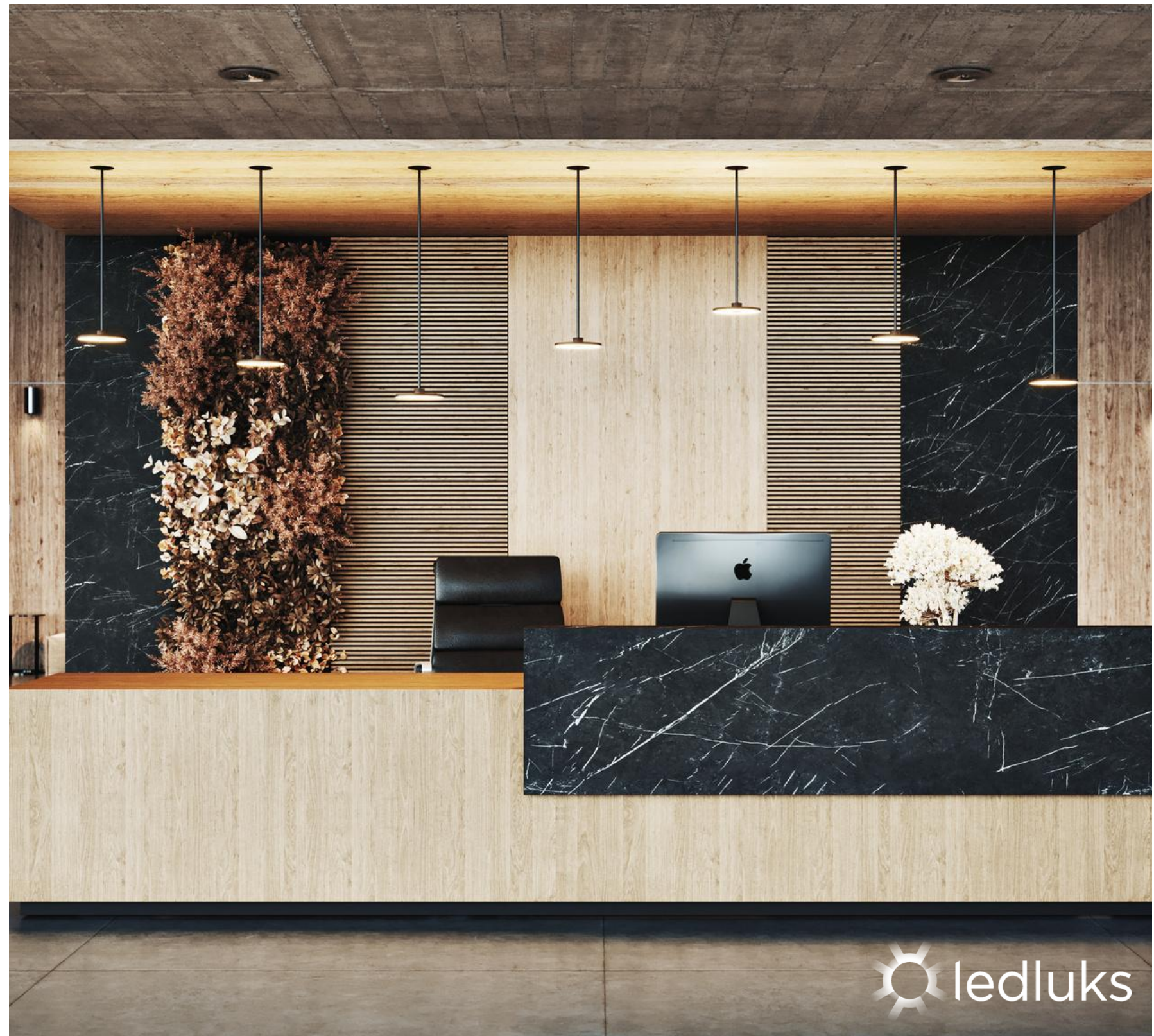


Wall / Ceiling

Standard

Diamond





 ledluks



EOS CIRCULAR

From transparency to
homogenous light.

- High-quality aluminium housing with a powder-coated black or white fine texture.
- 4050-7640 lm
- 45-84W
- 2700 / 3000 / 4000 / 5000K
- CRI > 80, CRI > 90



EOS

Minimalism. Style. High visual comfort.

- High-quality aluminium housing with black or white powder-coated finish
- 5030-5510 lm
- 60-65 W
- CRI > 80, CRI > 90
- 2700 / 3000 / 4000 / 5000 K
- Available sizes: 1200x300mm, 1200x450 mm, 1500x300 mm and 1500x450 mm



EOS



EOS SYSTEM

Pendant modular system for
special applications

- 2700 / 3000 / 4000 / 5000 K
- CRI > 80, CRI > 90
- High-quality aluminium
housing with a powder-coated
black or white fine texture.



DALI

NO
DIM



EOS SYSTEM



APOLLO

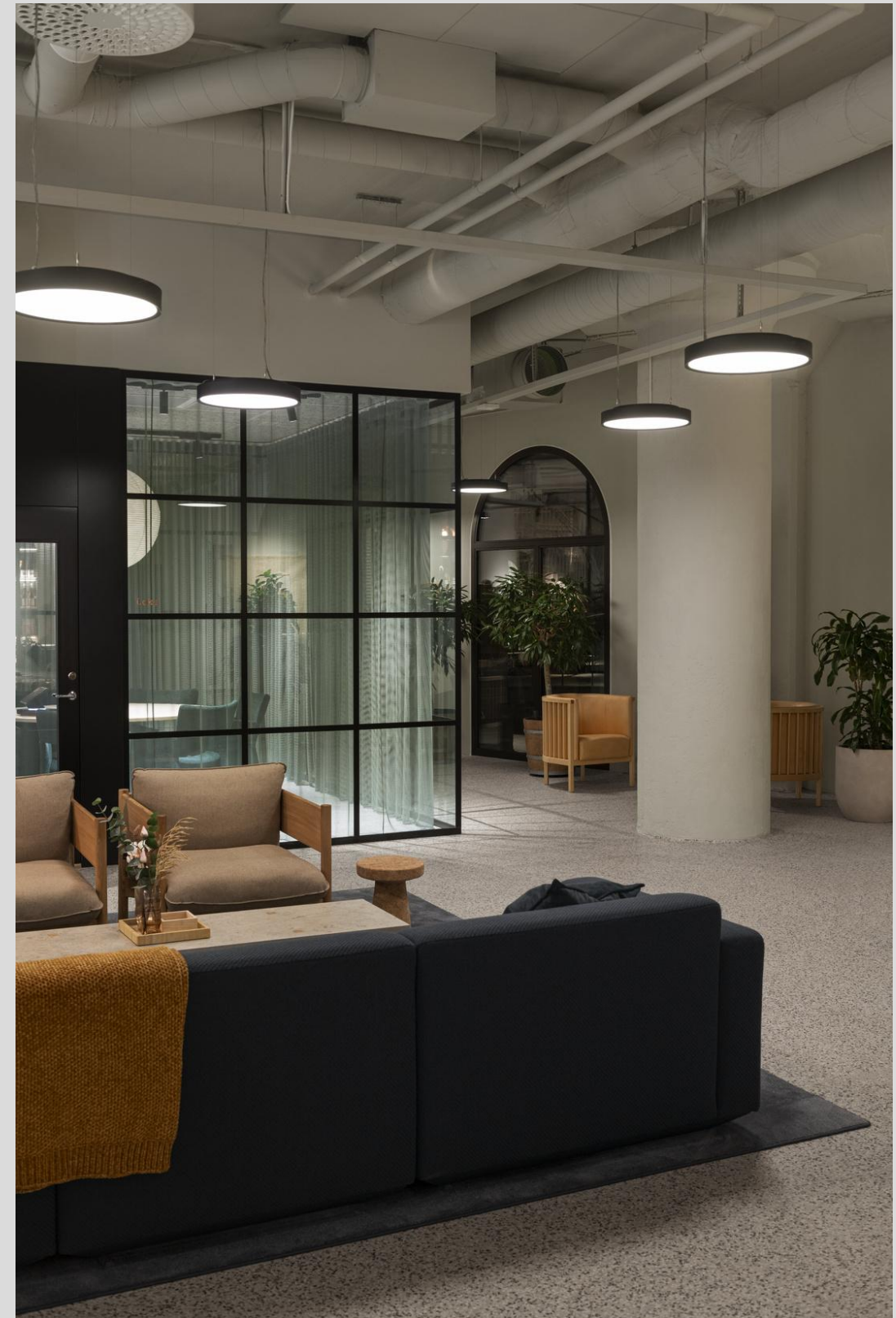


ø 450, 650 mm

- LP: 1960-5170 lm; HE: 2810-7390 lm; HO: 3740-9830 lm
- LP: 18-53 W; HE: 25-75 W; HO: 35-105 W
- 2700 / 3000 / 4000 / 5000 K
- CRI > 80 / CRI > 90
- MacAdamStep3
- High-quality aluminium housing with powder-coated finish
- Diamond prism + Opal (DOP) / Opal
- SLIM DESIGN 60 mm



APOLLO



KALA SHAPES



Hexagonal



Circular



Rectangular



Triangular



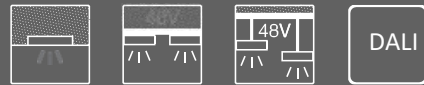
- Housing: High-quality aluminium with powder coated finish in **white** | **black** | **grey** fine texture
- HE: 1930-14.110; HO: 2570-19.750lm
- HE: 18–134; HO: 24-184W
- 2700 / 3000 / 4000 / 5000K
- CRI > 80, CRI > 90
- MacAdam Step 3
- L80 B20 at 100.000h, Ta=25°C ambient temperature



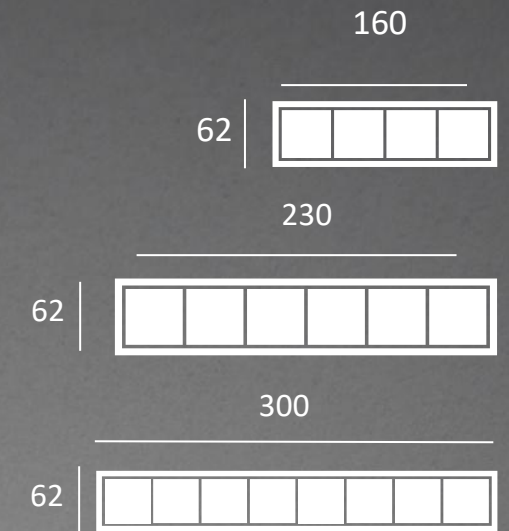
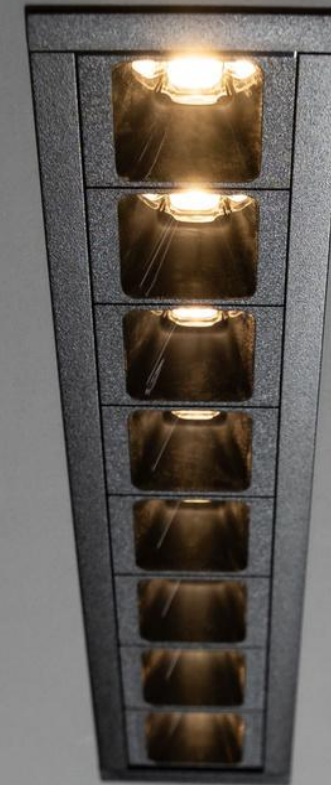


ILO **MINI**

The shortest member of ILO family

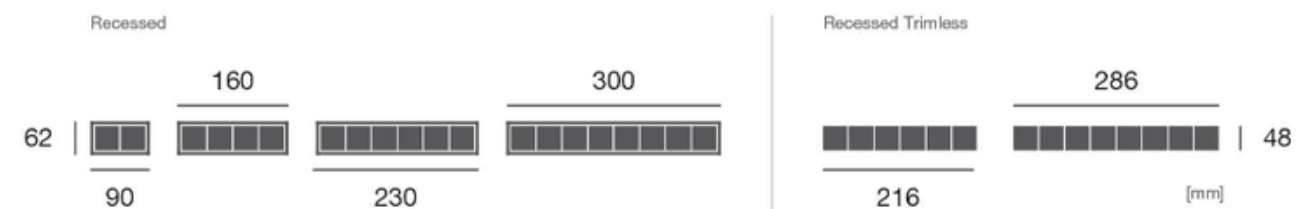
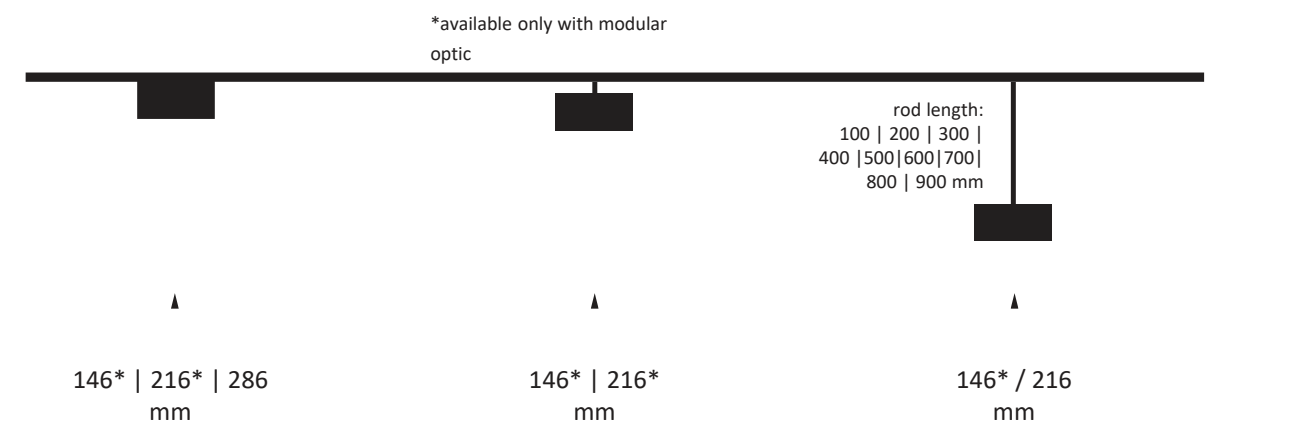


- Housing: High-quality aluminium with powder coated finish in **white** | **black** fine texture
- 2700 / 3000 / 4000 / 5000 K
- CRI > 80 / CRI > 90
- MacAdam Step 3
- UGR < 16
- L80 B20 at 100.000h, Ta=25°C ambient temperature



MINI ILO

Minimalistic, yet impressive.

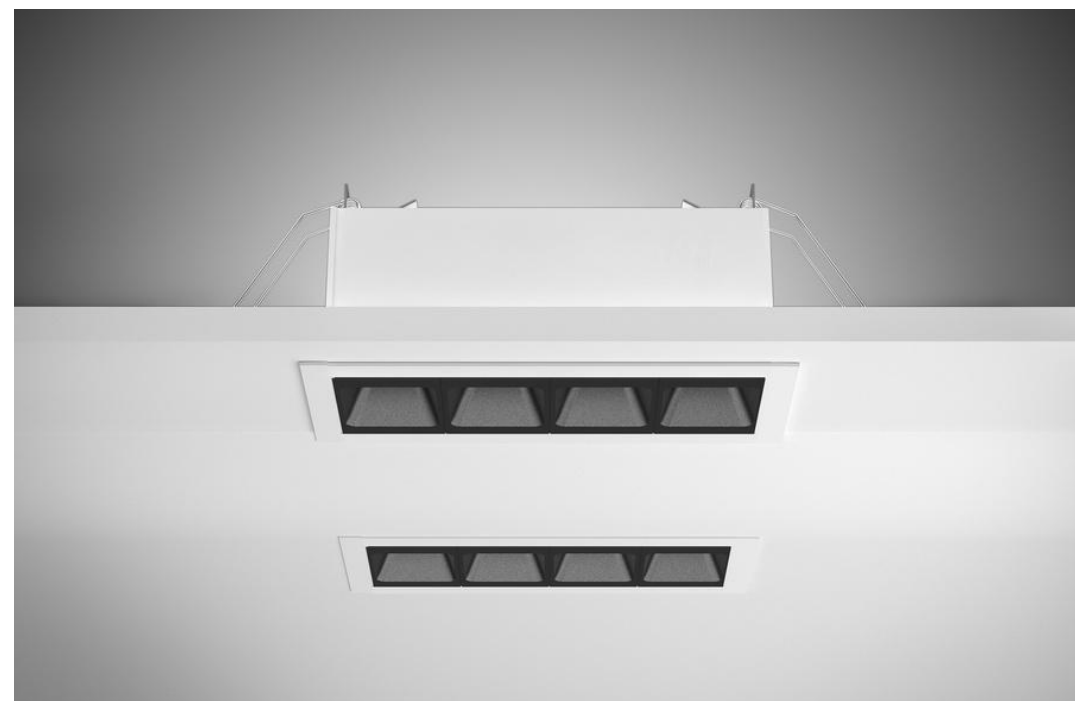


Mounting versions

RECESSED



RECESSED



TRACK



TRACK WITH ROD



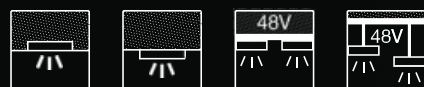
TRACK WITH HINGE



IKAR

Ring-shaped luminaire

- High-quality aluminium housing with powder-coated finish
- 260-740 lm
- 4-12 W
- 2700 / 3000 / 4000 / 5000 K
- CRI > 80 / CRI > 90
- L80 B20 at 100.000h
- Optics: specially designed optical lenses



Mounting versions

CEILING



RECESSED



TRACK



RECESSED WITH ROD



TRACK WITH ROD



IKARtrack 220V

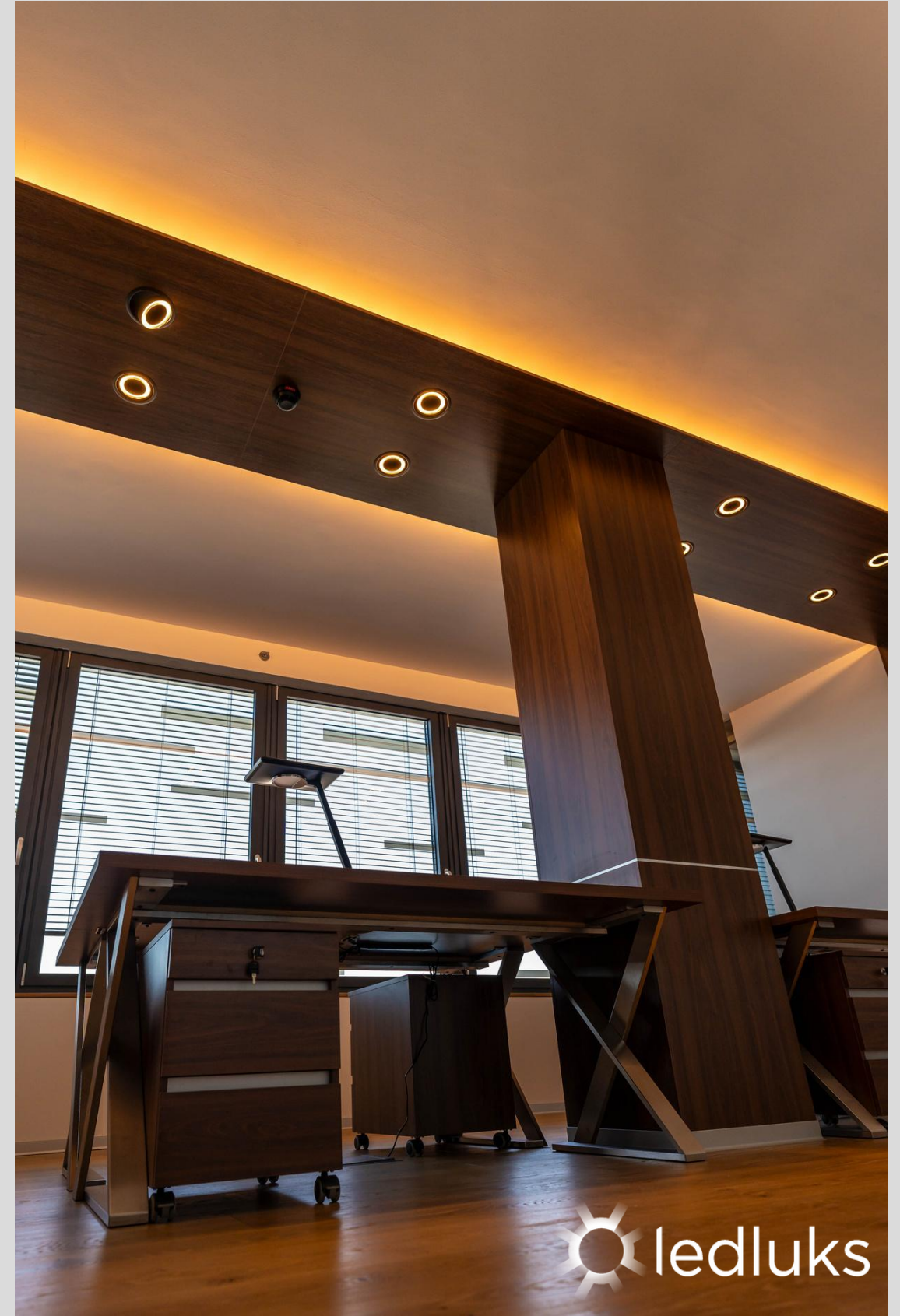
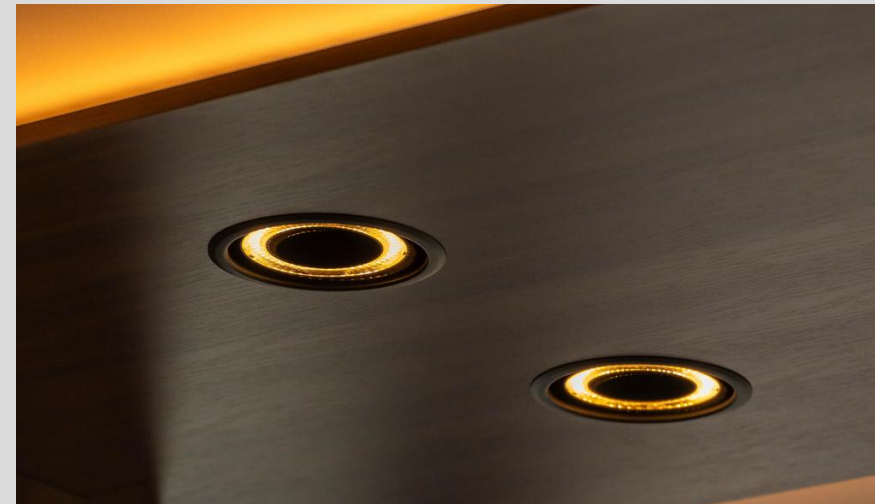
Ring-shaped luminaire

Characterized with a ring light, IKAR is a fascinating alternative to conventionally-shaped downlights. The completely adjustable head can be freely rotated through up to 360° as well as to $\pm 90^\circ$ direction for an optimum adaptation of light on different angles.

Now also available on 220V track in a reborn, more powerful version.



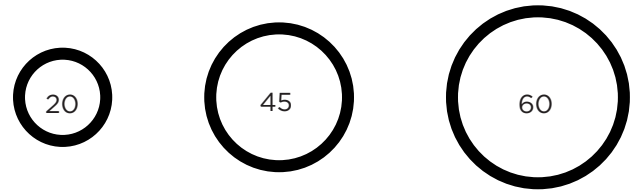
IKAR



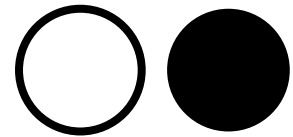
NOOX

Precision in every detail

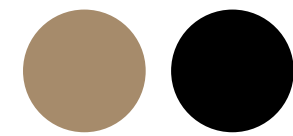
Dimensions



Housing

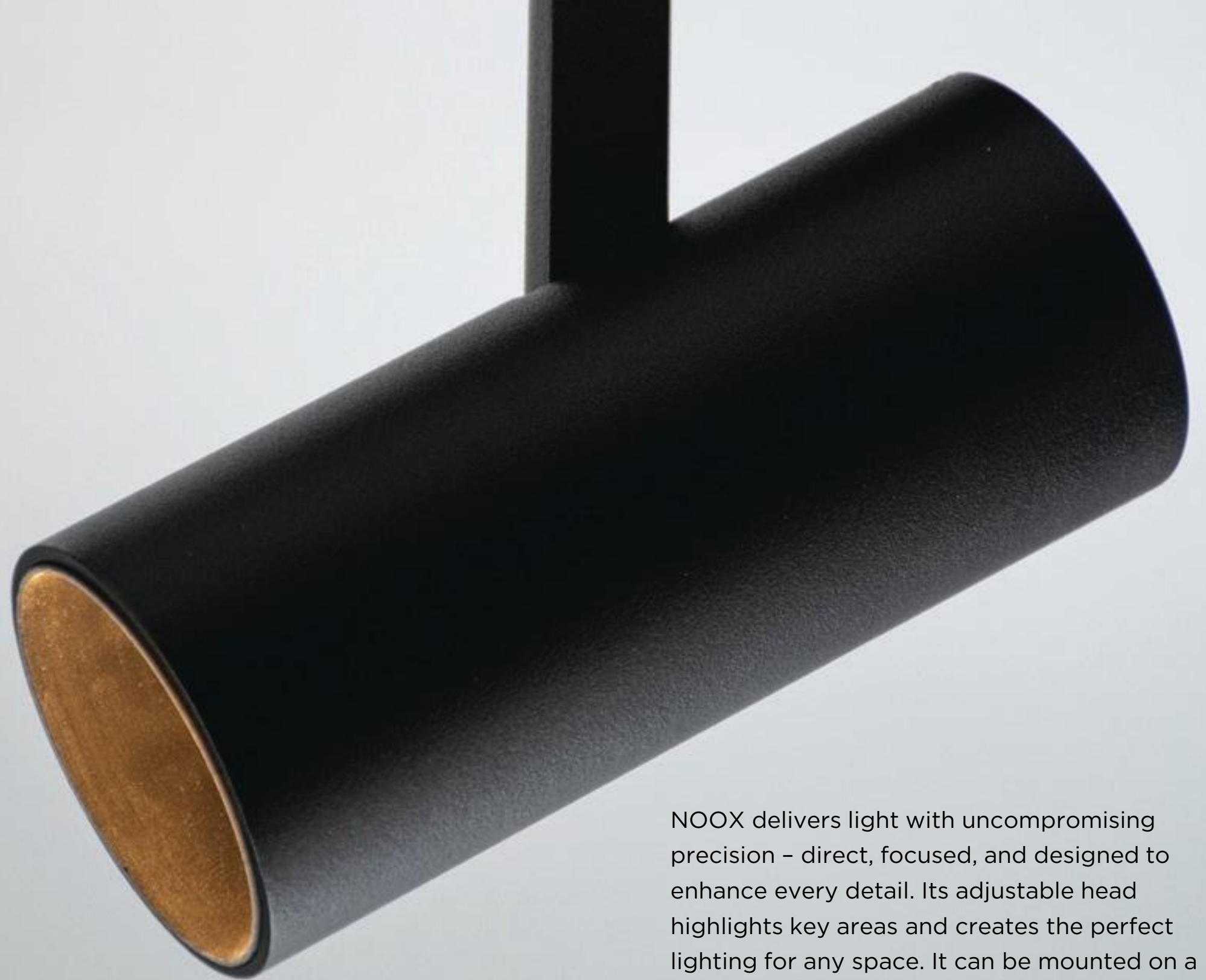


Funnel



Technical data

- Efficacy: 113 lm/W
- Color temperature: 2700/3000/4000 K



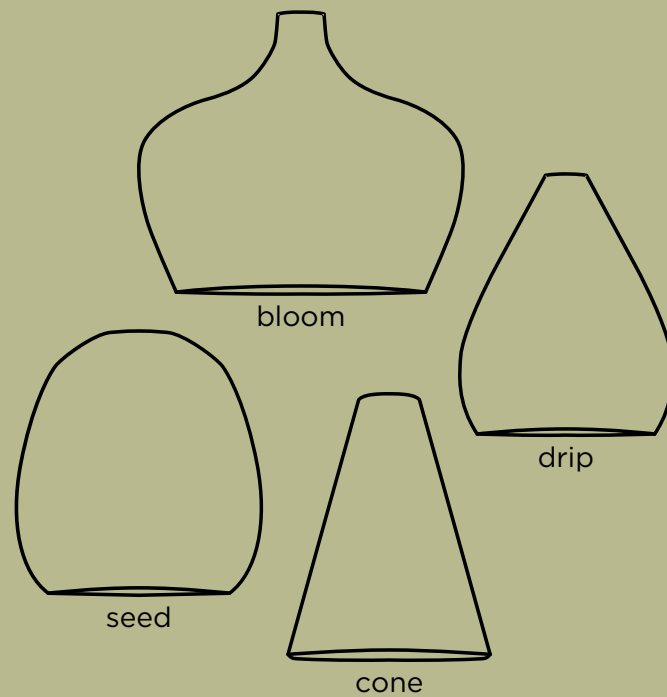
NOOX delivers light with uncompromising precision – direct, focused, and designed to enhance every detail. Its adjustable head highlights key areas and creates the perfect lighting for any space. It can be mounted on a track system or integrated as a functional and stylish add-on to an existing lighting profile.



FLORA

New look to sustainability

With its innovative use of sustainable materials, FLORA offers a bold, creative approach that excels in both design and technical excellence. Made from biobased PLA with 40% recycled wood fibers, FLORA minimizes waste and CO2 emissions through local production and 3D printing.



Technical data

- Efficacy: 25 lm/W
- Color temperature: 2200 K



MIDI RAW

Sustainable by Nature. Remarkable
by Performance.

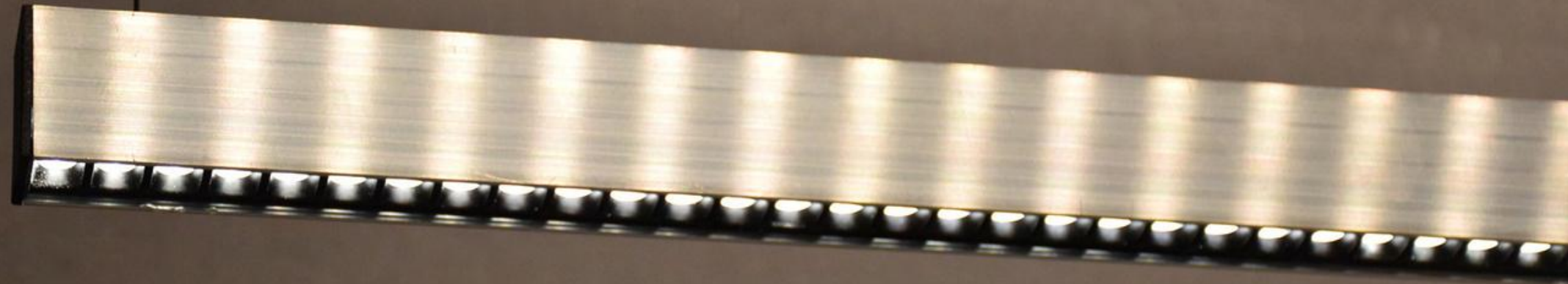
MIDI RAW redefines lighting profiles through
miniaturization — delivering the same
performance with significantly less material.

- Up to 3x less aluminium
- Up to 70% less plastic
- 50% less packaging material

Technical data

- Light output: 1010 - 4100 lm/m
- Efficacy: 90 lm/W
- Color temperature: 3000 / 4000 K

Ready to order



ILO NATUR

The sugarcane luminaire

Inspired by the renowned ILO profiles family, ILO Natur defines the future of sustainable lighting. Its body is made from bio-based HDPE plastic derived from sugarcane, featuring a negative carbon footprint of $-2.12 \text{ kg CO}_2/\text{kg}^*$.

*for raw material



Coming in 2026

COMING SOON

FIBI

Harmony of timeless design and technical lighting

FIBI stands out with its timeless design and exceptional light transmission, achieved through the combination of ambient illumination and focused, directional lighting. Designed with a strong technical basis, these unique features provide high aesthetic value while enhancing the atmosphere of the space.



Technical data

- Light output: 110 - 2100 lm
- Efficacy: 70.7 - 124.3 lm/W
- Color temperature: 2700 / 3000 / 4000 K

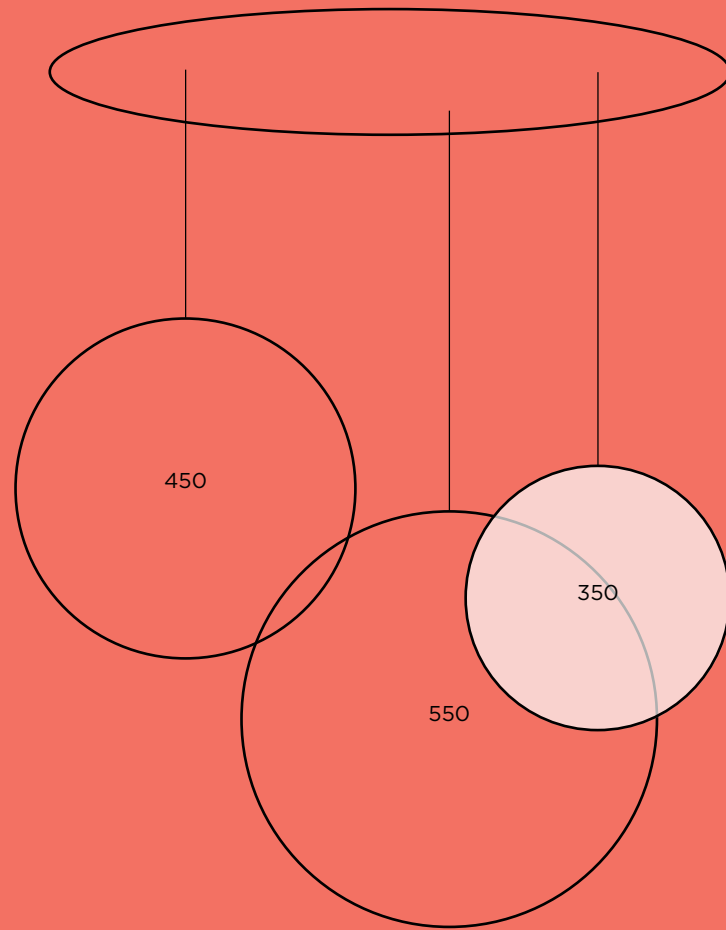
Ready to order from April 2026



FIBI

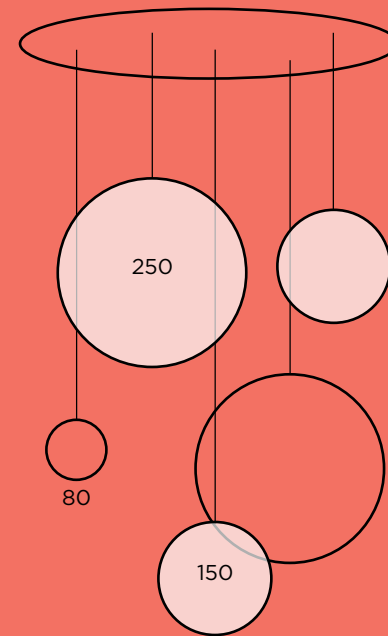
3x

900



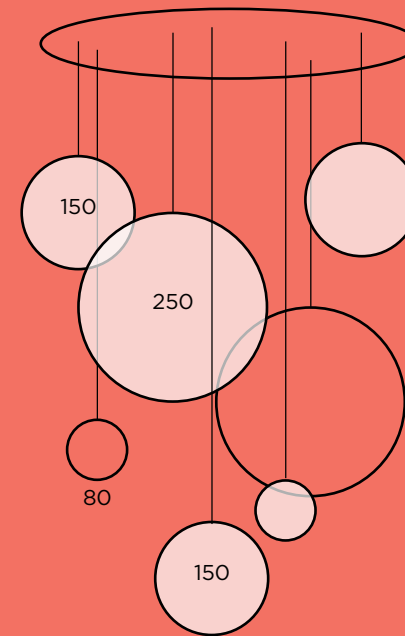
5x

500



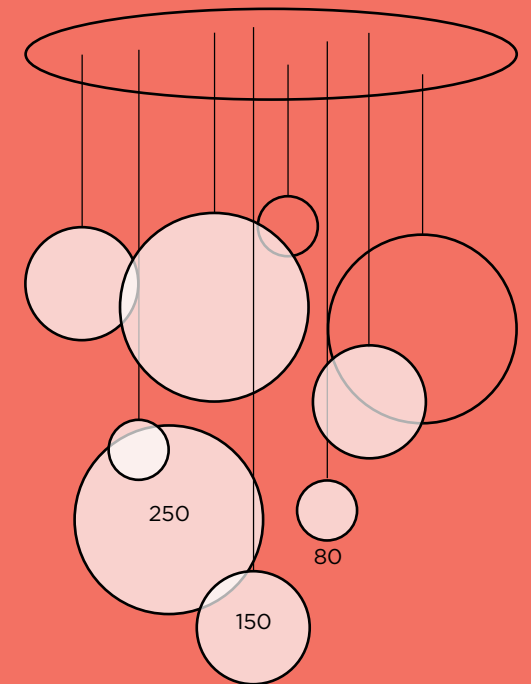
7x

500



9x

650



Ready to order from April 2026

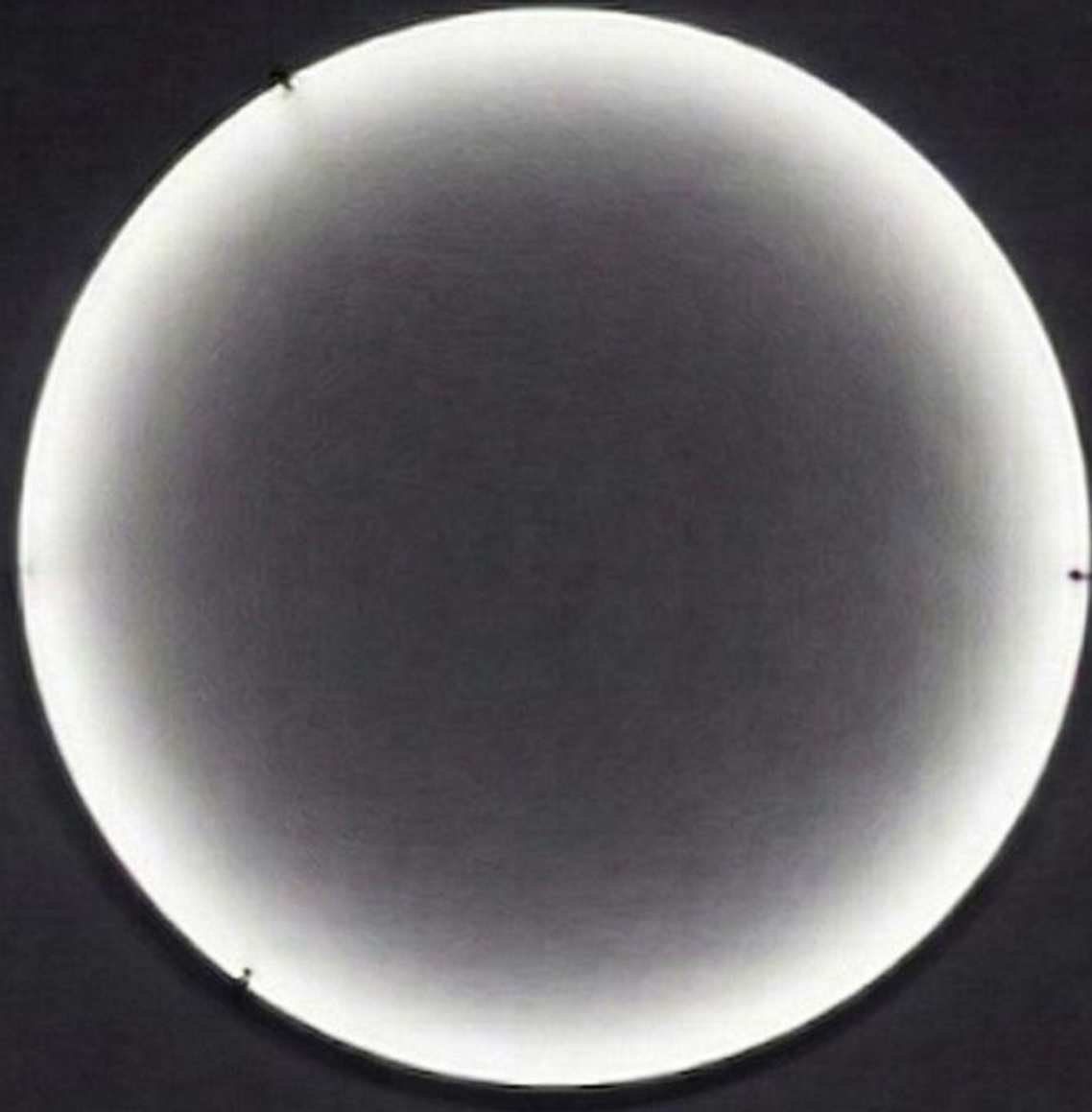
COMING SOON

DRY SOLE

DRY Sole features a continuous, closed circle, creating a sleek, harmonious presence that enhances the ambiance of any space.

Technical data

- Light output: 1280 lm
- Efficacy: 91 lm/W
- Color temperature: 3000 / 4000 K



∅ 900

∅ 1300

∅ 1600

Ready to order from end of April 2026

COMING SOON

DRY SYSTEM

DRY System introduces a flowing, curved design, offering dynamic lighting effects and versatile integration in modern interiors. The versatility of these additions allows you to adapt it for various projects and to use the same product family throughout the whole interior, easily adopting it in any project.

Coming in 2026

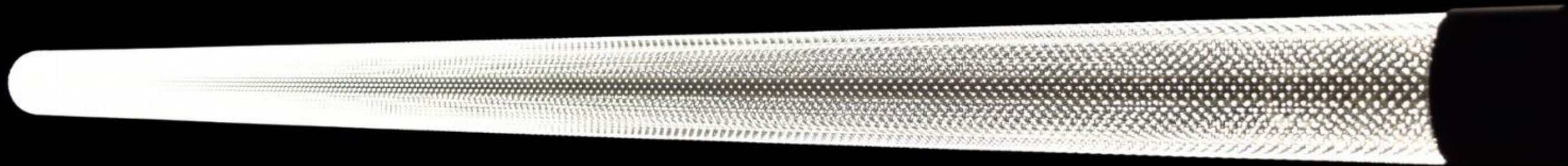
COMING SOON

RAZEL

Seamless Light.
Flawless Uniformity.

∅ 50

∅ 70



RAZEL delivers uniform light distribution through the innovative use of durable PMMA, featuring laser-engraved micro-dots ensuring precise and perfectly balanced illumination.

First versions **ready to order** from May 2026

COMING SOON

RAZEL

vertical

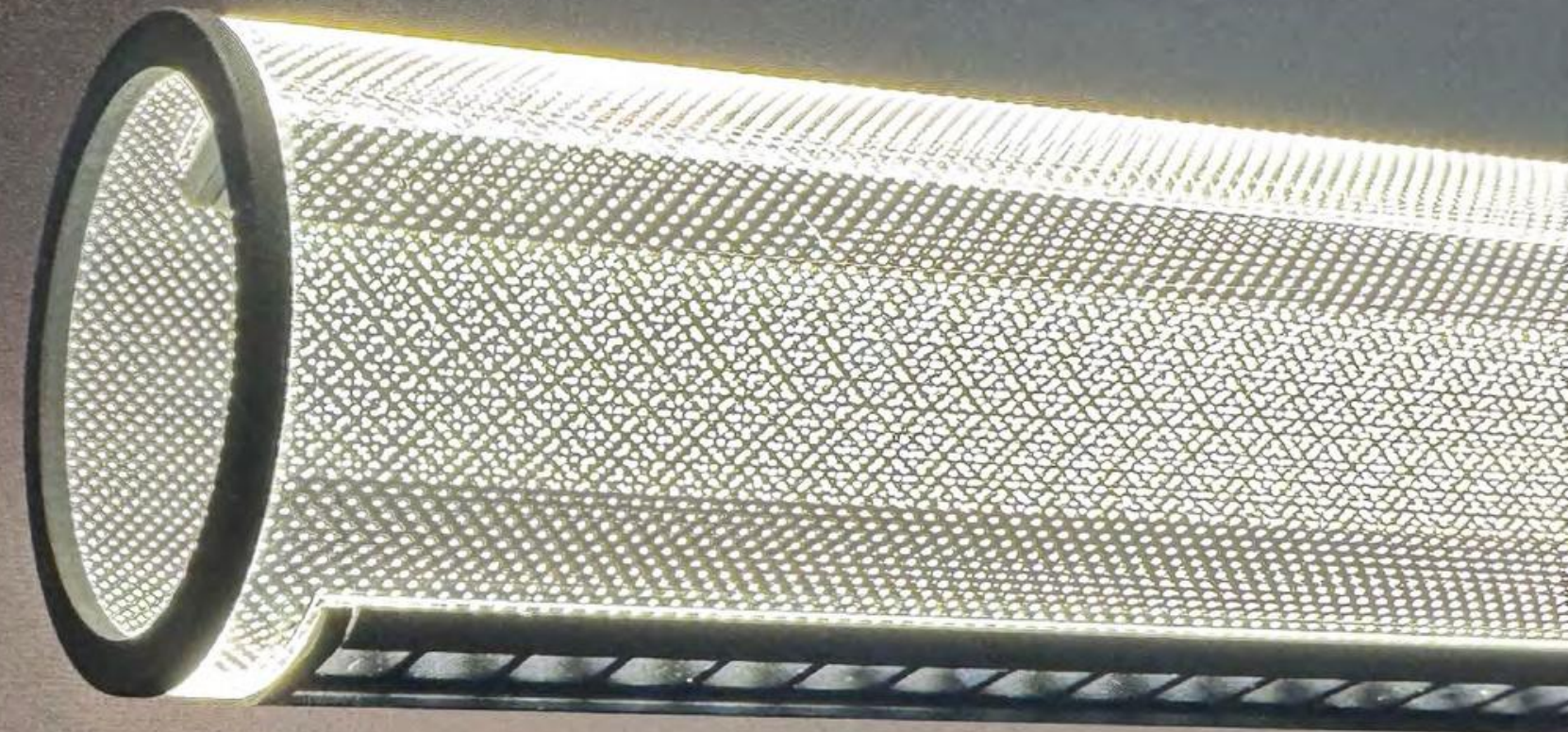
RAZEL Vertical elegantly descends from the rosette, creating inviting ambient light. With an optional focused spot, it can also provide the perfect solution for highlighting details.



First versions ready to order from May 2026

COMING SOON

RAZEL office

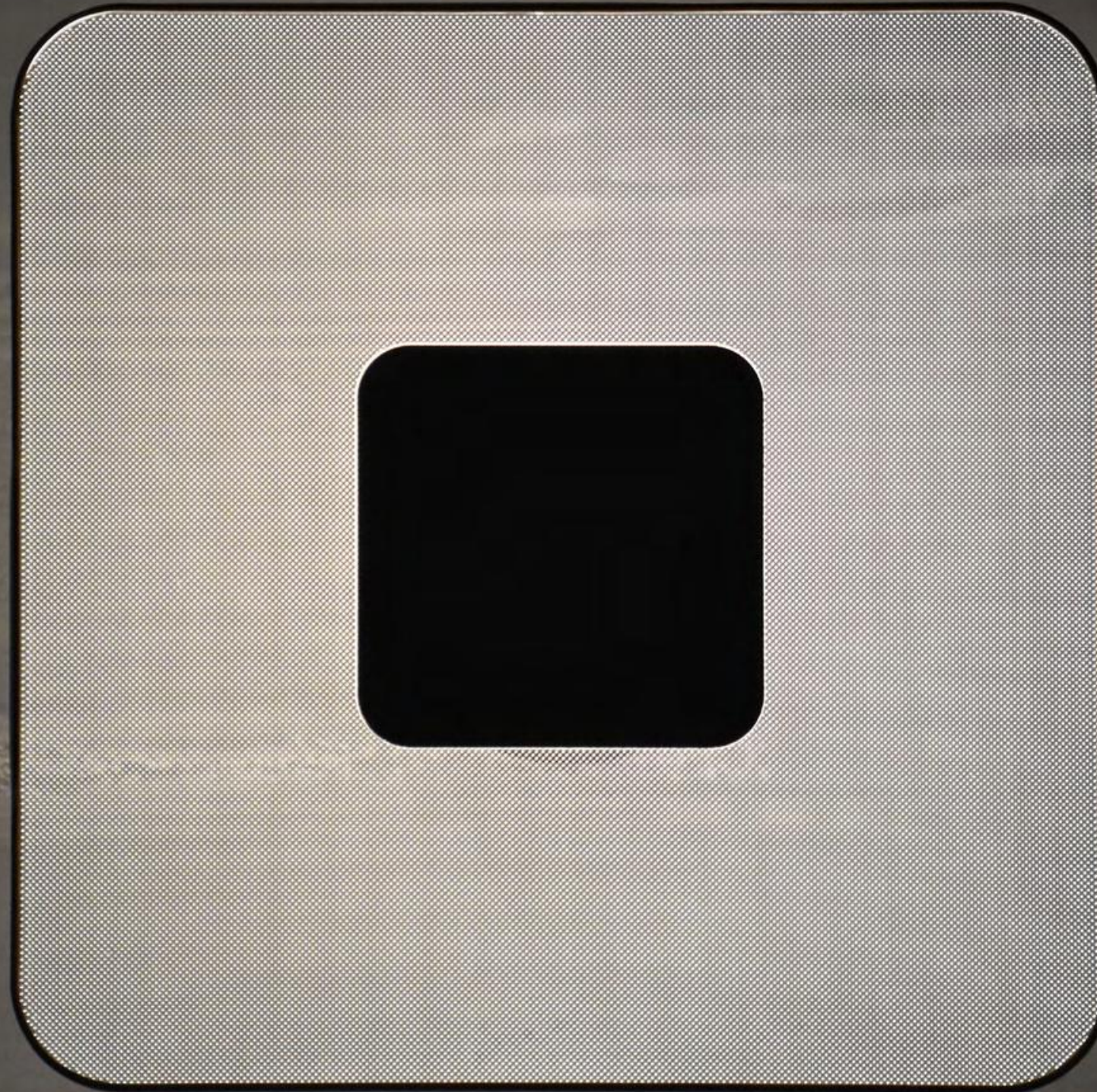


RAZEL Office builds upon the classic model by offering not only ambient light but also individually controlled task lighting. It provides comfortable illumination and supports productivity with flexible, user-centric lighting control. Ideal for modern office spaces and hospitality environments.

Ready to order from September 2026

COMING SOON

SOE SQU ARE



SOE Square features a sleek geometric form that enhances modern interiors.

Dimensions 400x400 mm

Ready to order from June 2026

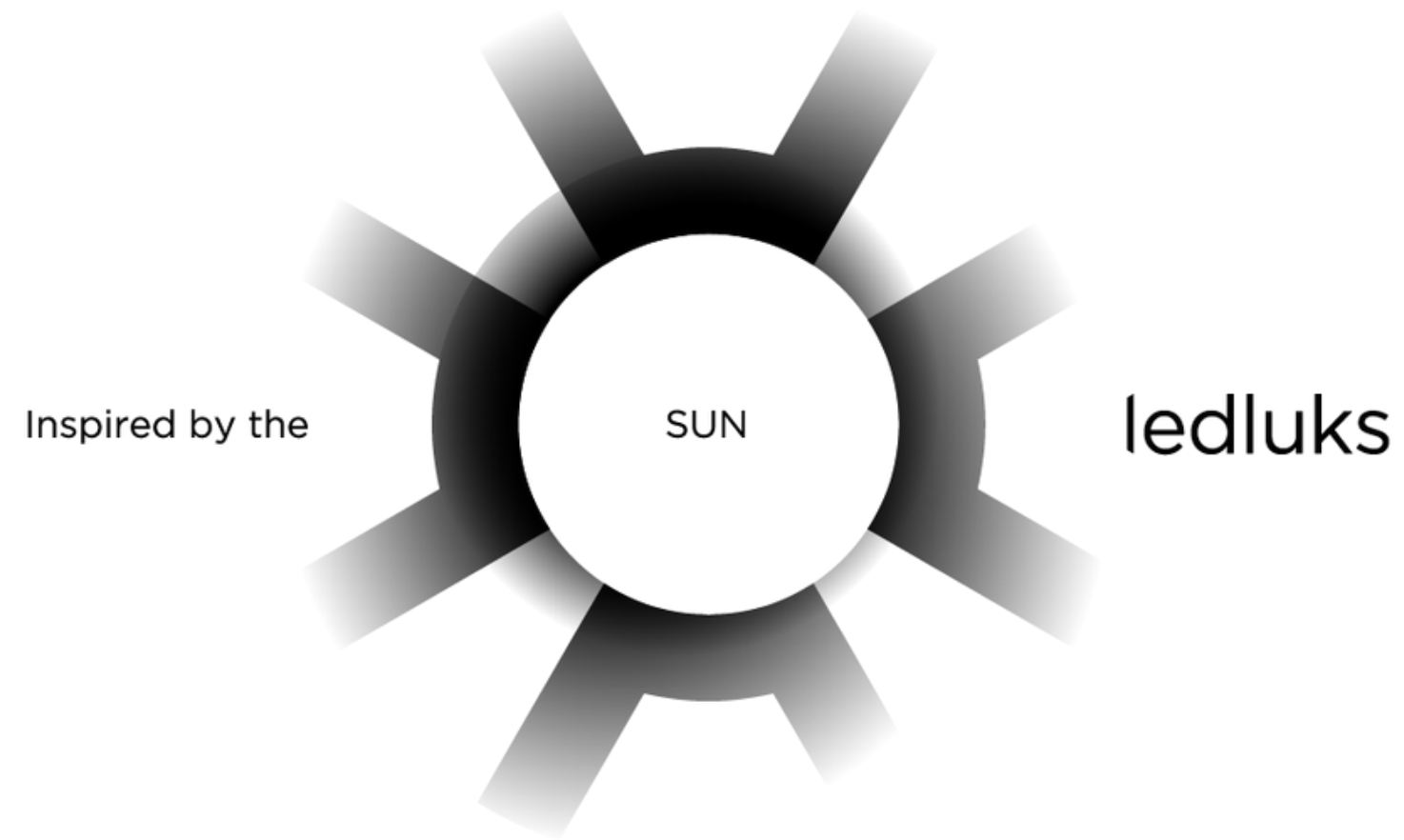
COMING SOON

SOE office

SOE Office brings sophistication into professional workspaces, featuring two-channel lighting that delivers both ambient and directional task illumination for a harmonious balance of atmosphere and functionality.

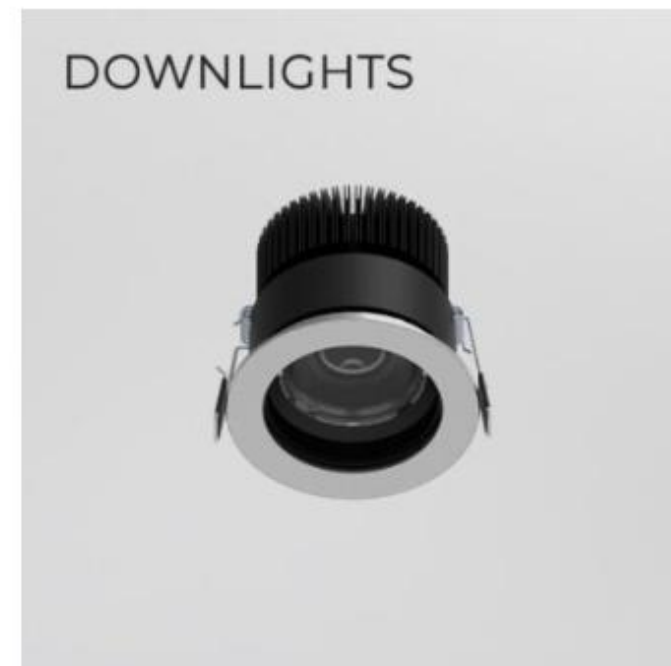
Coming in 2026





OUTDOOR

Product families





CHIO

40-65mm
180 - 1520 lm
2200 - 4000 K RGB



NICEA

40 - 110mm
40 - 350 lm
2700 - 4000 K



ESYR

32-50mm
180 - 1410 lm
2200 - 4000 K RGB



KOP

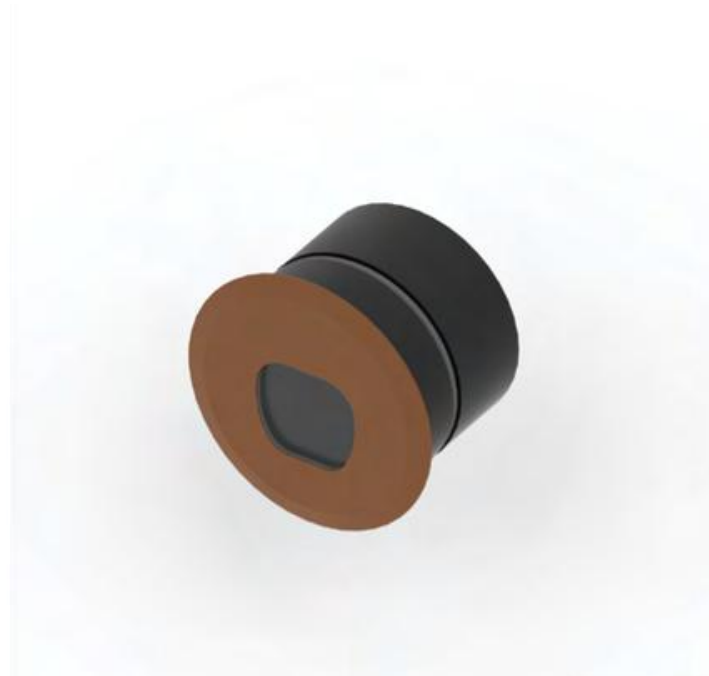
338 mm
240 - 600lm
2700 - 4000 K





KARAH

80 - 200mm
430 - 750lm
2700 - 4000 K



ARGOR

60mm
75 - 220 lm
2700 - 4000 K



SYRO

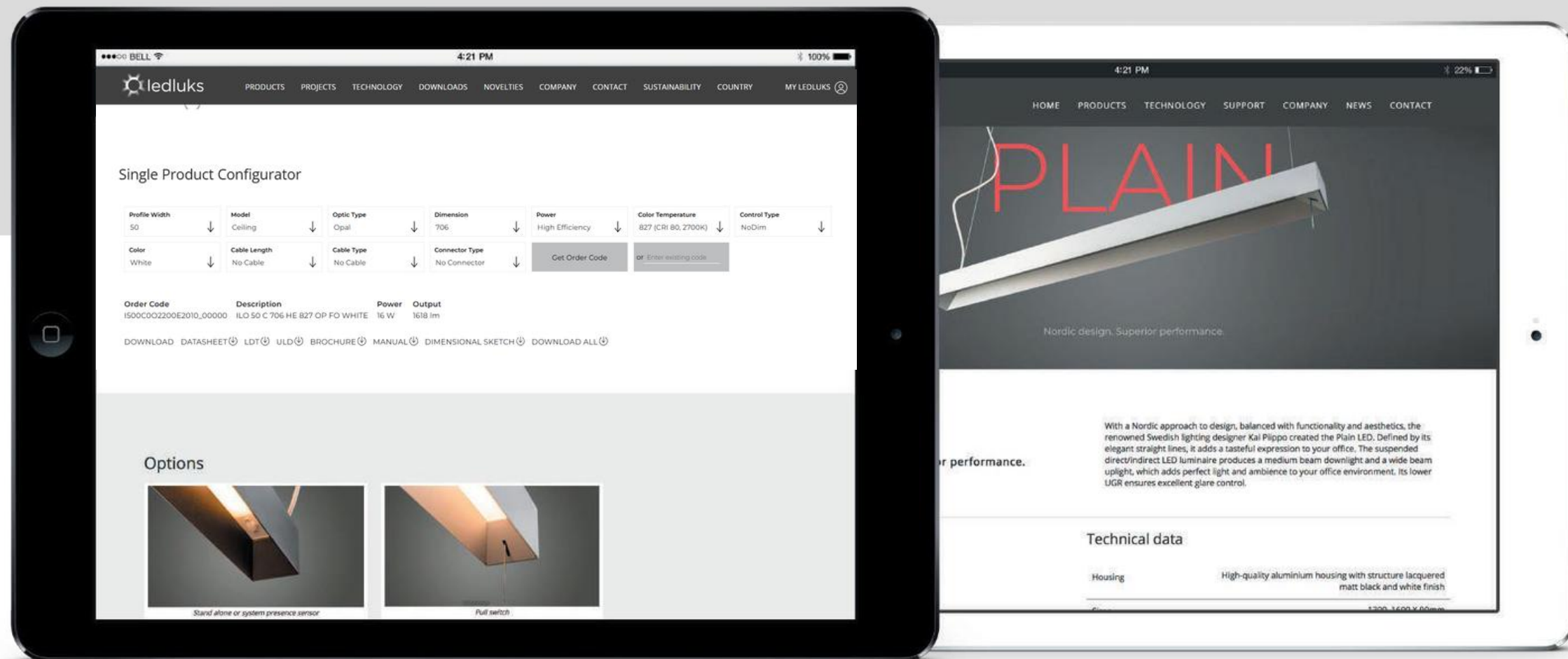
40mm
95 - 680lm
2700 - 4000 K





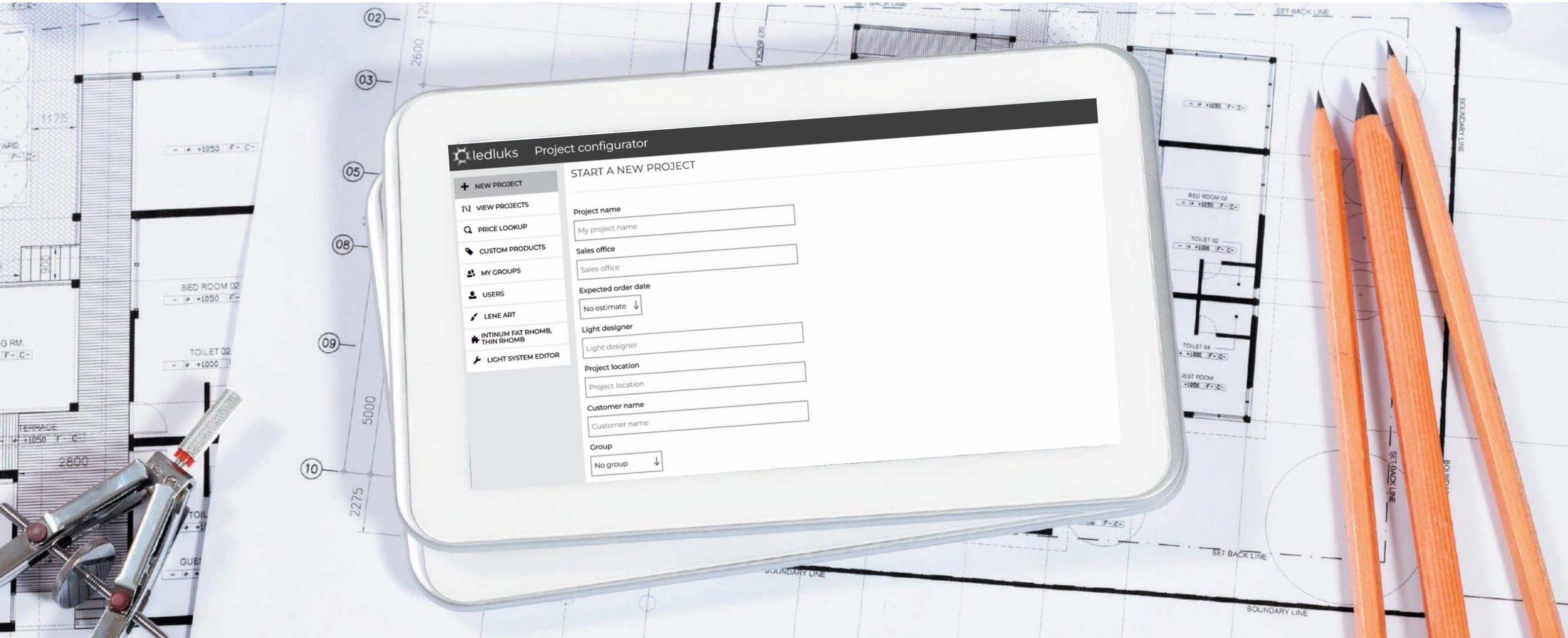
Fast and easy to find the right technical info for the product you need

User-friendly Products' Configurator to work with.



Project Configurator

Fast and easy to select the right products while working on a project





 ledluks