

Inspired by



Segment overview

Architectural and Technical LED Luminaires.



OFFICE



ARCHITECTURAL



INDUSTRY / SPORT

EDUCATION



HOSPITALITY



EXHIBITION



In-house engineering & development

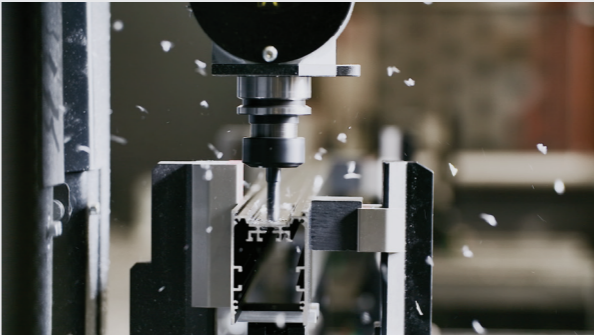


Focused on high-quality

Using digitalization to achieve a better user experience



In-house manufacturing



Responsiveness and customers oriented approach

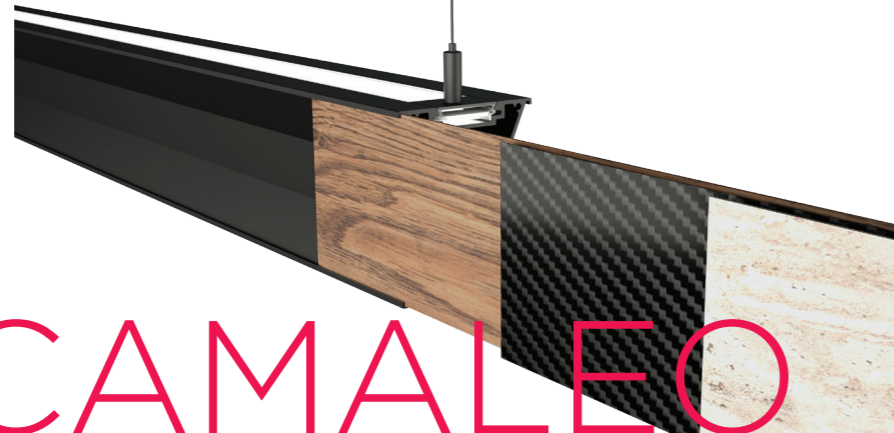


INNOVATION
FLEXIBILITY
FREEDOM

DRY

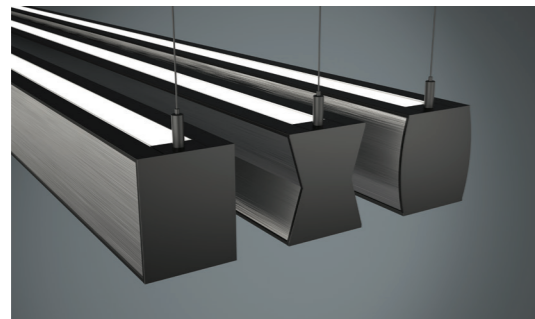
BY
**OLEG
COSNEANU**

DRY is a family of luminaires with an eye-catching effect. The variety in shape and the combination of an illuminated rod with an optional panel make DRY a very decorative and a functional luminaire. Its versatility allows you to adapt it for various projects and to use the same product family throughout your interior, easily adopting it in every office, hospitality or residential project. DRY is available in many installation options, like a pendant luminaire, stand-alone floor lamp or wall luminaire.



CAMALEO

BY **BOYAN CEGLAR**



Forms

Like a chameleon changing its skin, Camaleo changes its form, texture and material structure. Whenever you want something new, there's no need to change the whole luminaire, but just its 'skin' – by sliding the old cover out and placing the new cover in. Simple as that.

KALA
SHAPES

KALA comes in different forms like rectangular, circular and in triangle as a standard. Additionally, its adaptable design enables the extension to other shapes and application. With a 100 mm high profile and an even illuminated surface, KALA Shape is a universal, but a bold luminaire as well.



ORA
TUBE 60

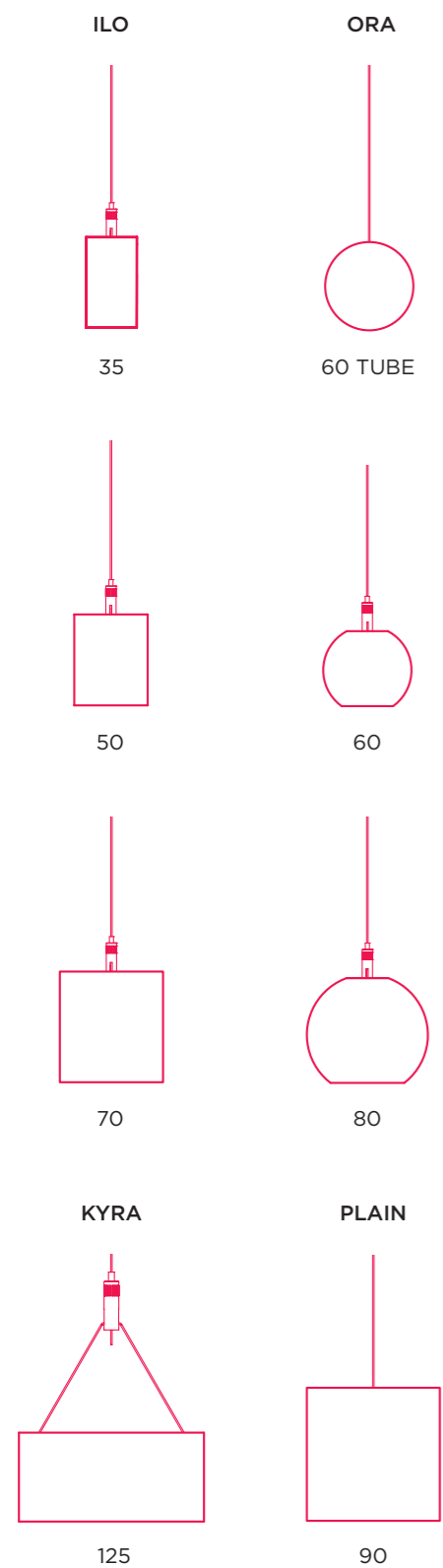
ORA Tube 60 is an extension to ORA family. Not just as a new member of the group, but also as a new possibility to connect it to the standard ORA 60 and form a unique application. Its specialty is the completely illuminated body, which makes the luminaire appearing like a tube. Combining coloured end-caps and coloured cables, the luminaire gets playful and a creative addition to your interior. Applications: linear pendant, ceiling and wall-mounted or in a hexagonal shape.



Next extension

TUBE
MINI

A ray of light, 17 mm thin.



PROFILES

Single luminaires and light-line systems



PROFILES

ORA Spectra:
available also with
Spectra technology.



Curved-edge **ORA** linear lighting profile



Elegant with its oval housing, ORA is a fresh new lighting solution when projecting the interior of an office or any public building. Its high-quality housing in a powder coated finish makes it a bold and stylish luminaire, available with various optics solutions: reflector (modular), opal, prismatic, office or asymmetric; and up and downlight possibilities.

- HE: 2000lm/m; HO: 3000lm/m
- 25-35W/m
- 2700 / 3000 / 4000 / 5000K or TW 2700 to 5000K
- CRI > 80, CRI > 90, CRI > 95
- McAdam Step 3
- L80 B20 at 100.000h, Ta=25°C ambient temperature



ILO

Continuous
light-line
system.



SunLike
Powered by

ILO Spectra:
available also with
Spectra technology.



The ILO luminaire is one of the most versatile profile solutions on the market. Designed for projects that demand a high quality lighting system and high visual comfort, it offers a vast selection of features, materials and performance features to choose from.

- HE: 2000lm/m; HO: 3000lm/m
- 25-35W/m
- 2700 / 3000 / 4000 / 5000K or TW 2700 to 5000K
- CRI > 80, CRI > 90, CRI > 95
- McAdam Step 3
- L80 B20 at 100.000h, Ta=25°C ambient temperature

35 mm



70 mm



50 mm



Prismatic



Opal



Nero



Asymmetric



Modular narrow
Modular wide



Office



Designed by Kai Piippo
for Annell.

PLAIN

Elegance of simplicity,
efficiency of LED
technology.

Ideal for offices.

The elegant product from our family range is now available in different lengths, starting from 752mm and reaching up to 2852mm in single piece. Separate units can be also connected together to form longer systems. The product was additionally extended with various optic types, which can be used according to your preferences and your needs. You can choose between opal, prismatic, modular wide/narrow and office optic.



- 2700 / 3000 / 4000 / 5000 K or TW 2700 to 5000 K
- CRI > 80, CRI > 90, CRI > 95
- McAdam Step < 3
- L80 B20 at 100.000h, Ta=25°C ambient temperature

KYRA

Low UGR.
Ideal for offices.

Popular in offices and school applications, KYRA is now available also as a system to form longer uninterrupted light-lines. Available as a recessed, ceiling or pendant mounting type.



- 2700 / 3000 / 4000 / 5000K or TW 2700 to 5000K
- CRI > 80, CRI > 90, CRI > 95
- McAdam Step 3
- UGR<16
- L80 B20 at 100.000h, Ta=25°C ambient temperature

SHAPES^{ILO}

Square, rectangular and hexagon pendant luminaires. Simple and contemporary.

Based on the design of ILO profiles, ILO Hexagon and ILO Quadro come in various sizes, optics options and up and down light. The geometrical shape adds playful feel to any architectural or office spaces. Being pre-assembled as one unit, an easy installation is guaranteed.

Hexagon shape is available also with ORA Profile.

- 2700 / 3000 / 4000 / 5000K
- CRI > 80, CRI > 90
- McAdam Step 3
- L80 B20 at 100.000h, Ta=25°C ambient temperature

APOLLO



With its wide area of illuminated circular surface and indirect lighting, the Apollo delivers homogeneous illumination and a pleasant atmosphere. Being available in various dimensions, it offers you several possibilities when applying the same luminaire's family within a project. The Apollo is a versatile solution for offices, lobbies, foyers, lounges, reception areas and other spacious ambiances, adding character and enhancing the room.

- 2700 / 3000 / 4000 / 5000K
- CRI > 80, CRI > 90
- McAdam Step 3
- L80 B20 at 100.000h, Ta=25°C ambient temperature



ø 450, 680



ILO MINI

With its aesthetic appeal, ILO Mini offers new application opportunities for a modern and sophisticated look for any type of environments, including hospitality applications, restaurants, museums, corridors, office buildings, private buildings and other similar areas.

- 2700 / 3000 / 4000 / 5000K
- CRI > 80, CRI > 90
- McAdam Step 3
- UGR<16
- L80 B20 at 100.000h, Ta=25°C ambient temperature



Recessed
90 / 160 / 230 /
300 mm

Recessed Trimless
216 / 286 mm



Track
39* / 76 / 146 /
216 / 286 mm



Track with hinge
39* / 76 / 146 /
216 mm



Track with rod**
39* / 76 / 146 /
216 mm

* available only with modular optic
** rod length:
100, 200, 300, 400, 500, 600, 700,
800, 900 mm

Minimalistic,
yet impressive.



GERMAN
DESIGN
AWARD
WINNER
2020



LIGHTING
DESIGN
AWARDS 2020

BIGSEE
PRODUCT DESIGN
AWARD 2020
WINNER



IKAR

Ring-shaped luminaire

Characterized by a ring light, IKAR is a fascinating alternative to conventionally-shaped luminaires. The fully adjustable head can be freely rotated up to 360° as well as to a ±90° direction for an optimum adaptation of light on different angles. Specially-designed optical lenses developed using innovative know-how in optical expertise deliver pleasant and directional light with low UGR and with hidden LED hot spots.

- 2700 / 3000 / 4000 / 5000K
- CRI > 80, CRI > 90
- McAdam Step 3
- L80 B20 at 100.000h, Ta=25°C ambient temperature

ø 65, 127





EOS CIRCULAR

From transparency
to homogeneous light.



Ten different sizes from
470 to 2000 mm

Characterized with a 24mm slim aluminium ring around a completely transparent panel, EOS Circular is an elegant and unobtrusive element in the room, which apparently changes its form when switched on, losing its transparency and transforming it in a homogeneously distributed light. It results in the perception of pleasant circular light hanging in the air.

- 2700 / 3000 / 4000 / 5000K
- CRI > 80, CRI > 90
- McAdam Step 3
- UGR<19
- L80 B20 at 100.000h, Ta=25°C ambient temperature



EOS

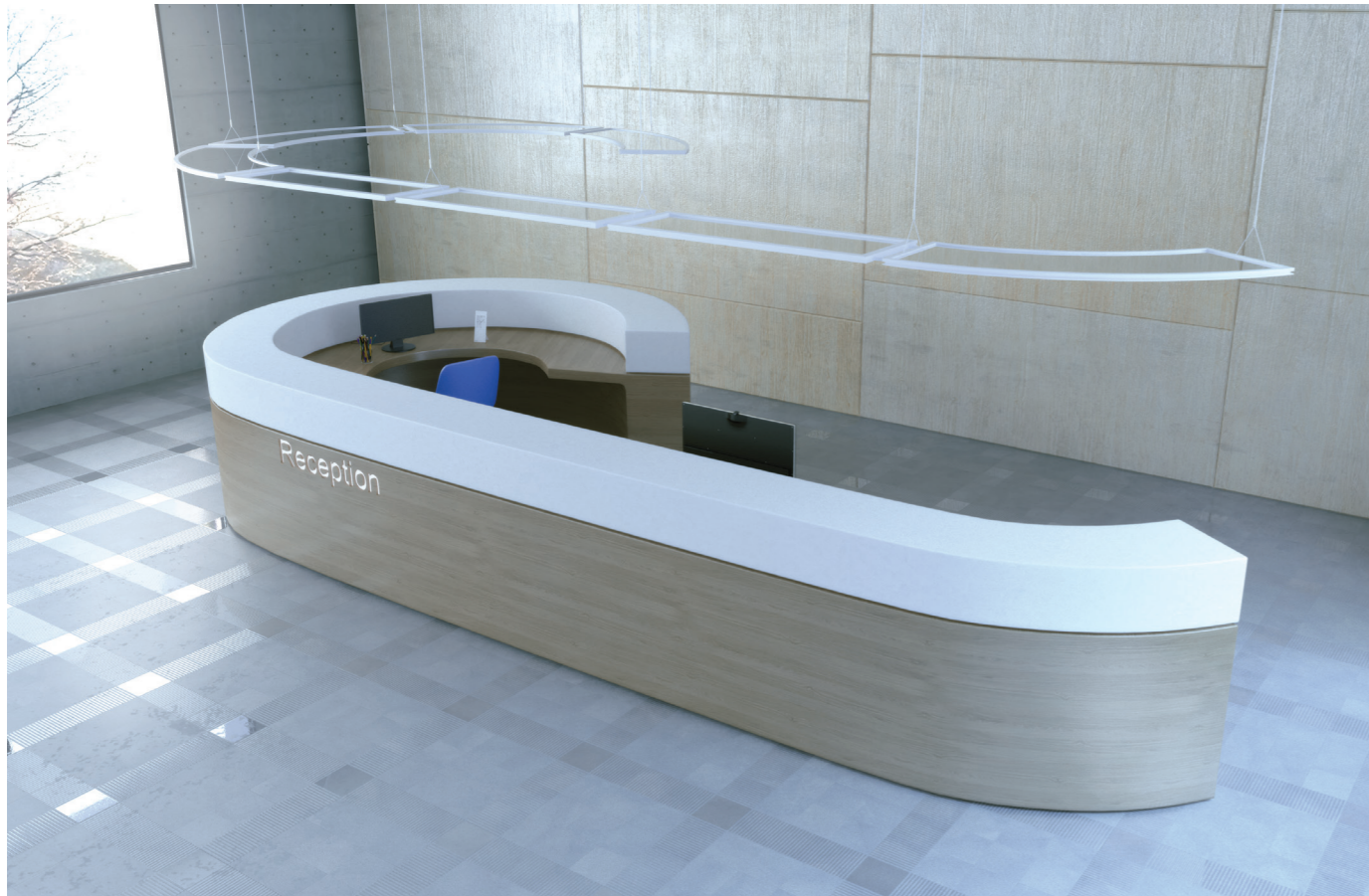
Minimalism. Style.
High visual comfort.

The luminaire that makes your office a place of comfort and gives a stylish touch to your interior. Emitting light both up to the ceiling and down to the workspace, it supplies homogenous glare-free light and maximum level of visual comfort. It is the perfect fixture for conference rooms, open offices, lobbies, and other environments where you want to make an impact.

- 2700 / 3000 / 4000 / 5000K
- CRI > 80, CRI > 90
- McAdam Step 3
- L80 B20 at 100.000h, Ta=25°C ambient temperature



EOS SYSTEM



Pendant modular system for special applications



A perfect balance between decorative and functional lighting, a fixture that enhances the mood and modern feel of every lighting area in an office building, hotel foyer, conference room, entrance or corridor.

- 2700 / 3000 / 4000 / 5000K
- CRI > 80, CRI > 90
- McAdam Step 3
- L80 B20 at 100.000h, Ta=25°C ambient temperature



ARUN

Light that supports performance and well-being

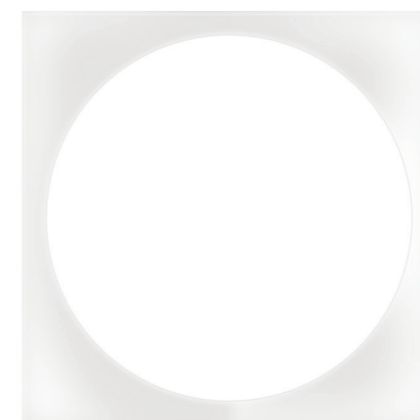
The ARUN LED recessed luminaire produces biologically effective light. Thanks to the Tunable White option, it not only has a positive affect on the human biorhythm, health and sleeping quality, but also significantly influences the effectiveness and concentration at work.

- microprismatic optic and opal PMMA diffuser provide optimal, uniform and glare-free light with no visible LED hot spots and excellent light transmission
- flicker-free dimming (20-100 %)
- CRI > 80, CRI > 90, CRI > 95
- UGR < 19 (< 16 on request)
- available sizes: 600x600, 1200x300 mm
- 2700 / 3000 / 4000 / 5000 K
- TW 2700-5000 K (on request)
- emergency 1 or 3 hours
- suitable also for suspended ceilings with grids - no extra cutting needed

113
lm/W



new
ARUN IP with tempered glass.



ALVA

A premium lighting environment for sustainable offices

The ALVA LED represents a SMART combination of design and technology achieving the best possible light quality even when illuminating the most demanding lighting areas. Its slim design makes it an ideal solution for tight ceiling conditions and the perfect option to expose the place's architecture.

- fine prismatic PMMA optic for perfect glare reduction and no "rainbow effect" / small symmetrical reflectors
- UGR < 16
- flicker-free dimming (20-100 %)
- CRI > 80, CRI > 90
- 2700 / 3000 / 4000 K
- available sizes: 300x600, 600x600, 625x625, 1200x300 mm
- suitable also for suspended ceilings with grids - no extra cutting needed

120
lm/W



ARUN Spectra:
now available also with
Spectra technology.

SunLike
Powered by 

HYPERION

Professional high-bay luminaire, the best choice for industry and sport

The HYPERION LED is a price-performance high-bay luminaire suitable for suspended or ceiling installations. It offers sustainable, high-efficient lighting for industrial plants, warehouses and sport areas.

- high efficiency: 149lm/W
- light output 10600-44000 lm
- material: extruded aluminium profile powder coated matt white RAL 9003
- available in different lumen outputs
- through-wiring (on request)
- power connection on side or on top (on request)
- temperature range from -25 to 50°C



HATOR

Low bay, durable and highly efficient moisture-proof luminaire

The HATOR LED represents a high-quality, excellent energy efficient and maintenance free moisture-proof luminaire. Its robust housing makes it the best choice for many applications, such as: multi-story car parks, industrial plants, warehouses, storage and cold storage rooms, loading bays, corridors, agricultural buildings and other facilities with complex ambient conditions.

- temperature range from -25 to 35°C
- CRI > 80, CRI > 90
- 3000 / 4000 / 5000 K
- gasket: non-aging expanded polyurethane





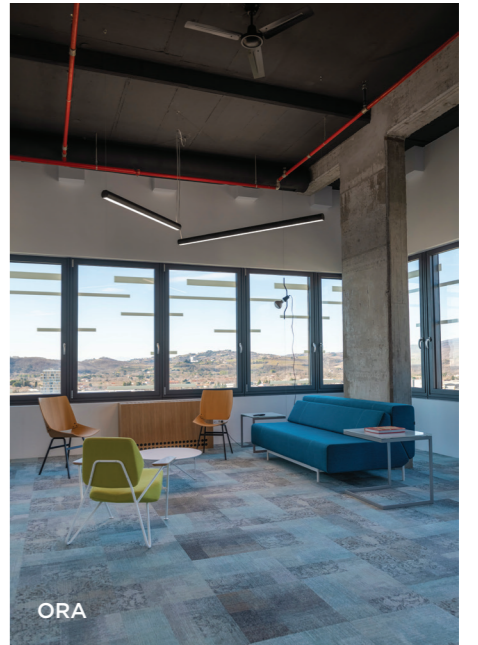
ILO



EOS Circular, EOS System



ILO



ORA



IKAR



ILO



ILO



ILO



KYRA



ILO Continuous light-line system



Hyperion



Hyperion



www.ledluks.com

LED Luks d.o.o.

Mednarodni prehod 6, Vrtojba

SI-5290 Šempeter pri Gorici

Slovenia (EU)

info@ledluks.com

